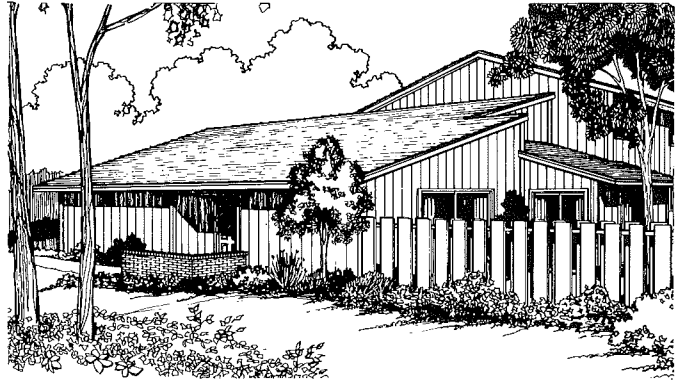


The Woodlanes

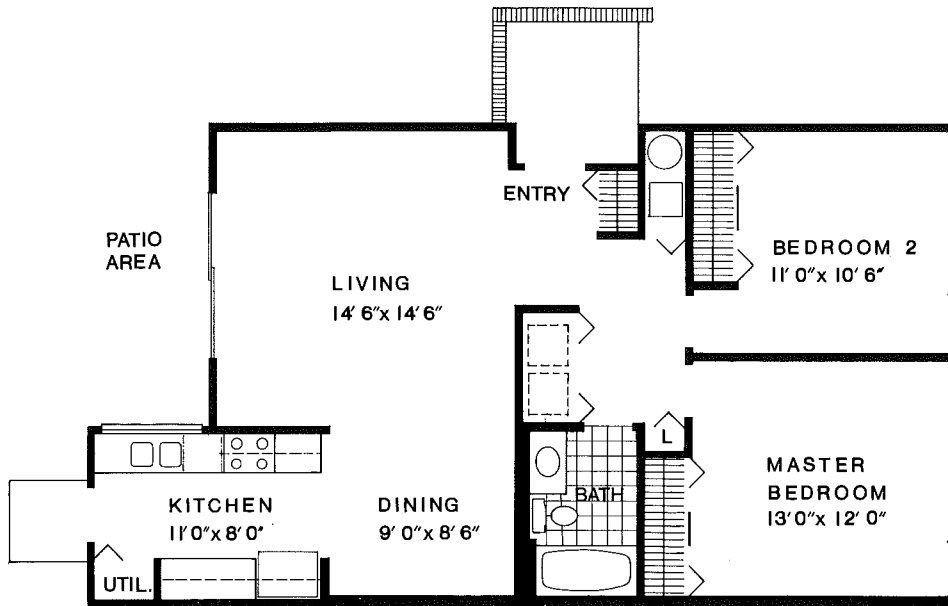
Townhome living for Woodridge Center.

Townhomes are a very effective way to buy more space for the money. A look through these plans can show you how rooms, halls, and outdoor areas are designed to maximize the usable space in each unit.

Many of the models are available with two-car garages and basements as optional items.



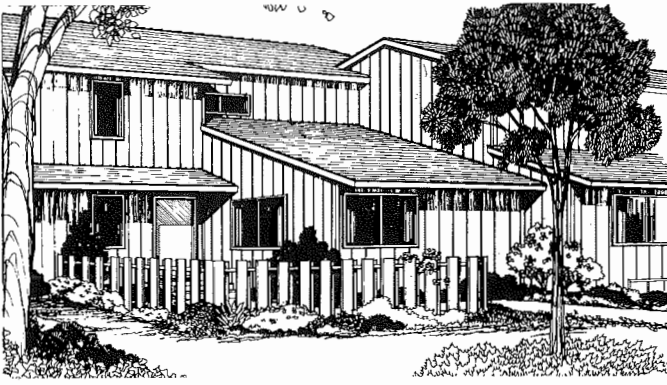
Illustrations are artist's conceptions.



THE BIRCH (Plan 11)

2 Bedrooms with 1 Bath

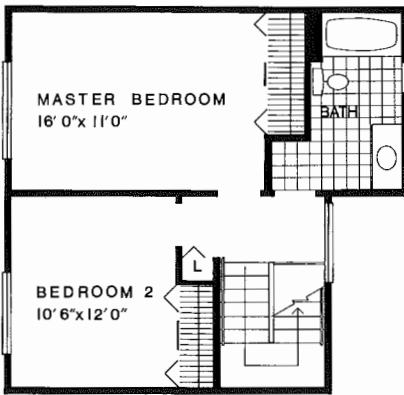
As an end unit, this home offers a completely private entranceway. Sliding glass doors take you from living room to patio. The kitchen also opens out onto the patio to permit an unobstructed view on three sides.



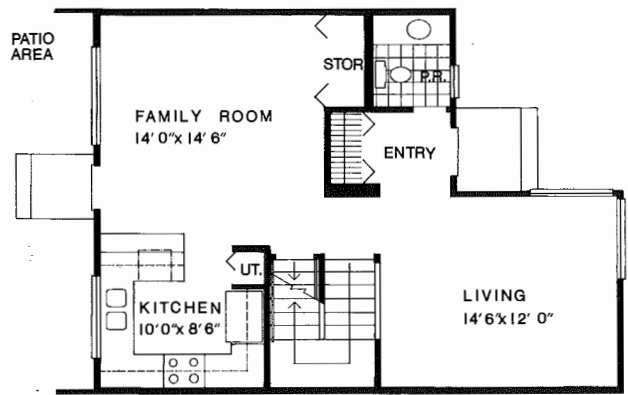
THE WILLOW (Plan 12)

2 Bedrooms with 1 1/2 Baths

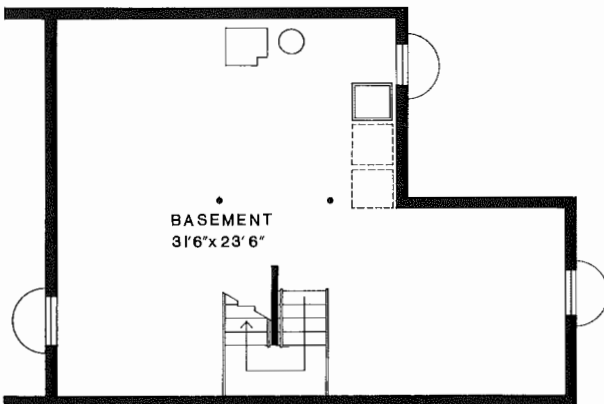
A large family room leads out to the patio area. A conveniently located powder room is immediately off the foyer. A carpeted stairway leads up to the master bedroom, second bedroom and full bath with vanity. (This model is available with basement; or garage or both.)



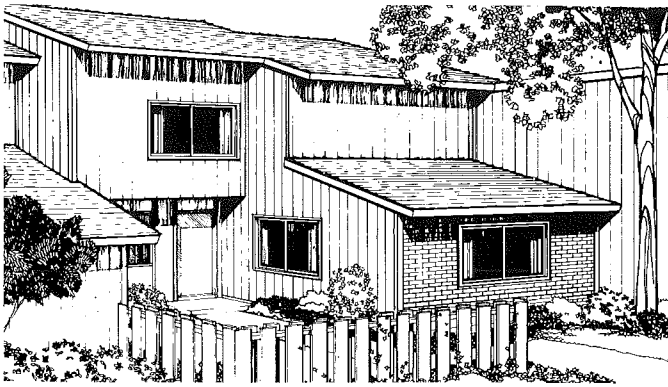
Upper level



Lower level



Basement

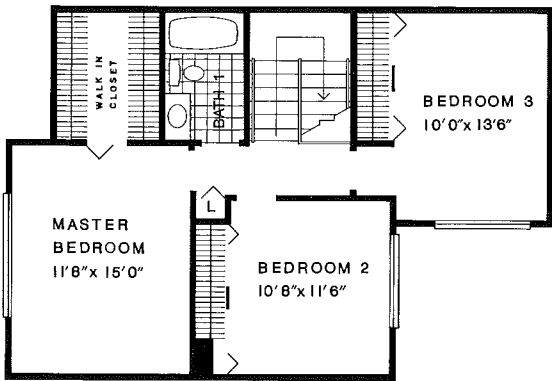


THE CEDAR (Plan 13)

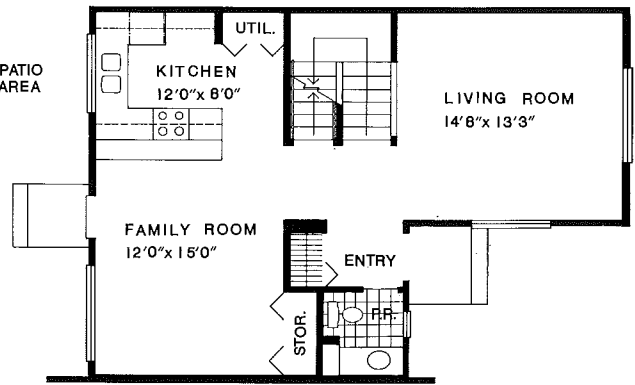
3 Bedrooms with 1½ Baths

Kitchen and family room open onto the patio area, an ideal arrangement for outdoor/indoor entertaining. The master bedroom has a large walk-in carpeted closet. Both the full bath upstairs and the powder room on the first floor have vanities.

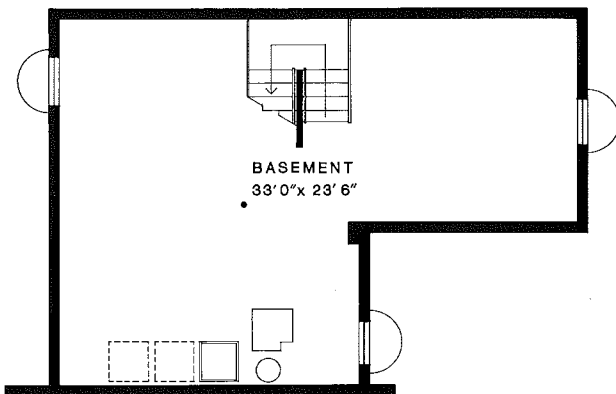
(This model is available with basement; or garage or both.)



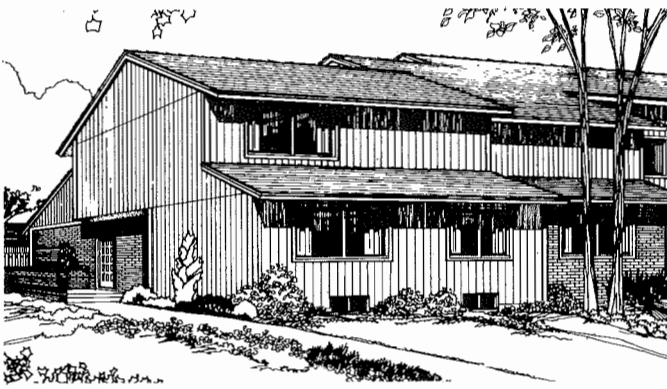
Upper level



Lower level



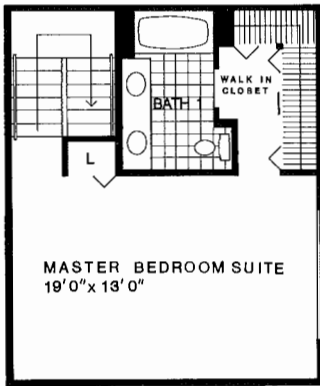
Basement



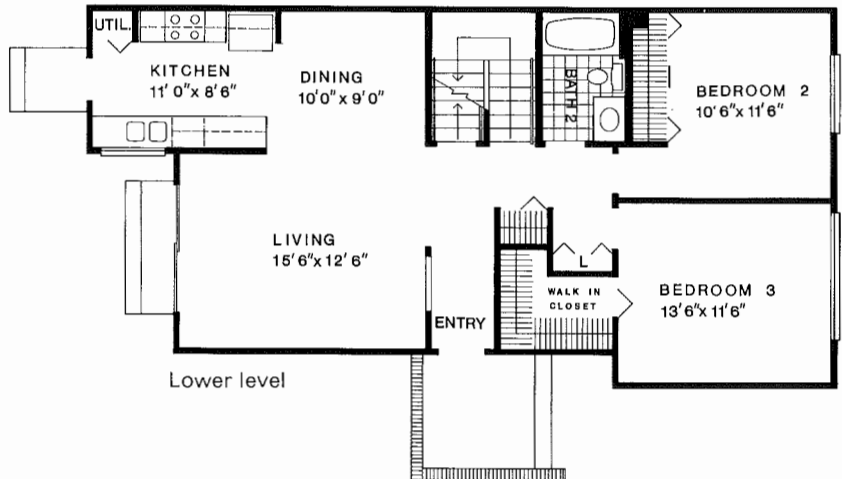
THE HICKORY (Plan 14)

3 Bedrooms with 2 Baths

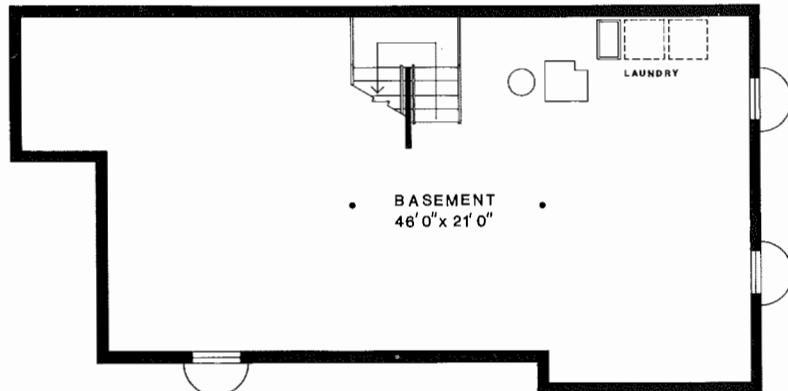
The unusually large master bedroom suite takes up the entire second floor. It features its own bath with double vanity plus a walk-in closet. The country kitchen has a pantry and dining area. An attractive railing separates the living room from the foyer. This model comes with basement and garage.



Upper level



Lower level



Basement

WOODRIDGE CENTER

Residential Sales

Phone: (312) 963-4000

6955 Woodridge Drive
Woodridge, Ill. 60515

All dimensions are approximate.
Floor plans and features are subject
to change without notice.