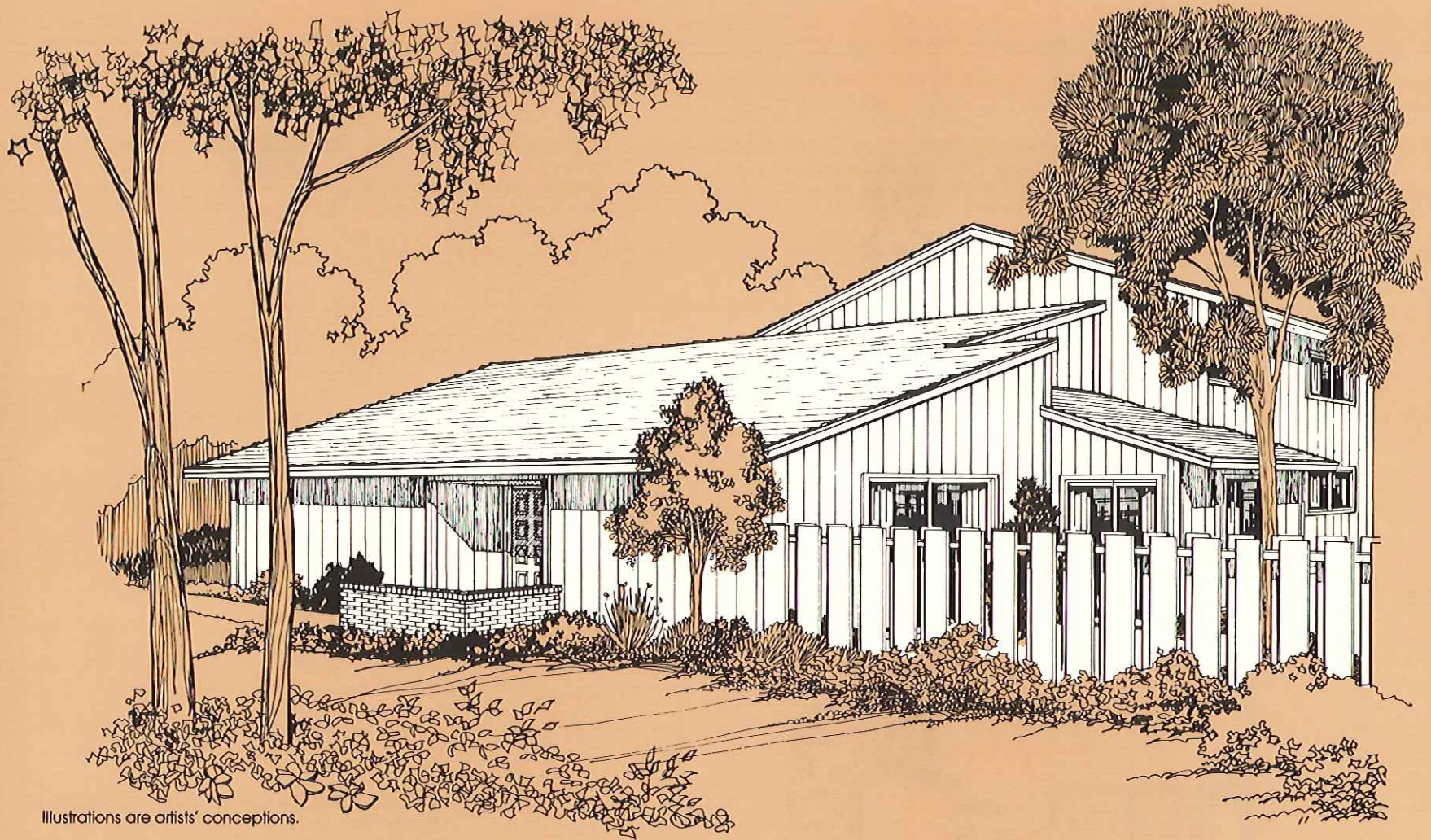


THE WOODLANES

Townhome living at Woodridge Center



Illustrations are artists' conceptions.

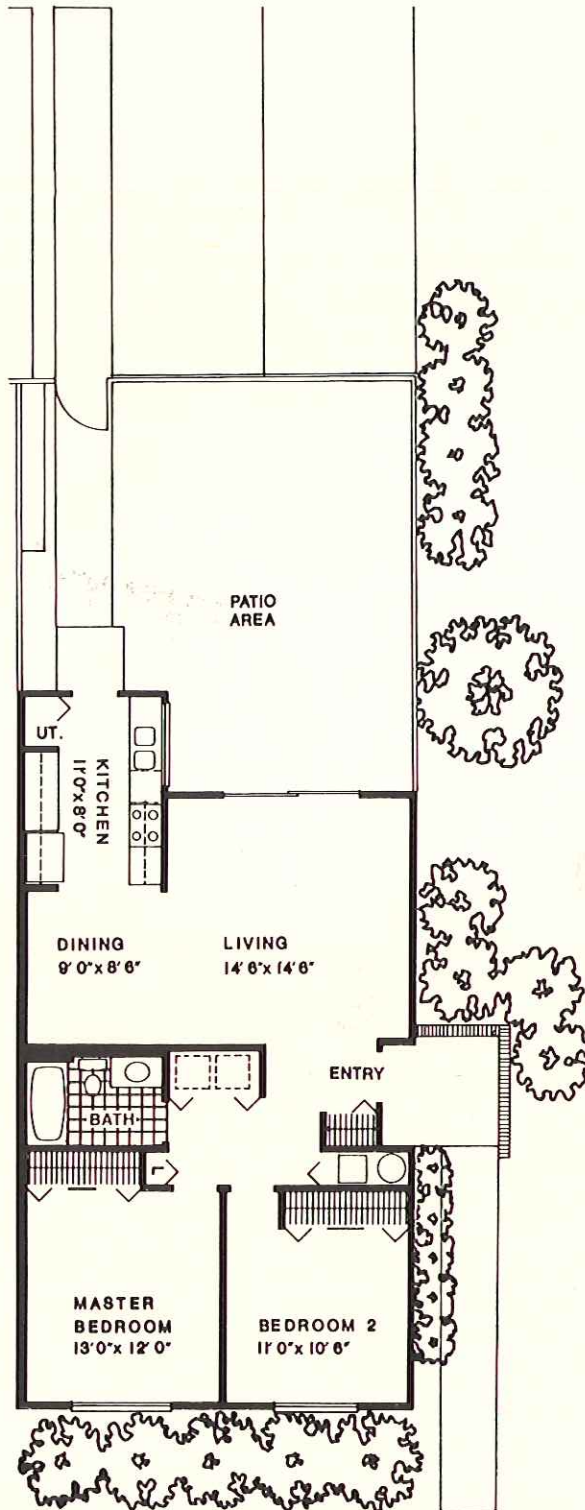
The Woodlanes combine townhome convenience with Woodridge Center's totally planned community to create an entirely new style of suburban living. Woodlanes townhomes offer excellence in design and construction, exterior maintenance, membership in the exclusive Village IV Clubhouse and your own "new town" for as little as it costs to rent.

The Birch (Plan 11) 2 bedrooms with 1 bath

The Birch is tastefully planned for comfort, convenience and privacy. As an end unit, this home offers a completely private entry. All Birch units feature sliding glass doors in the living room that open onto a patio. The kitchen also opens onto the patio. A separate dining area and large living room make entertaining a year-round pleasure.

The Birch (Plan 11)

W
Woodridge
Center



Rossmoor Associates reserves the right to modify the design, details, specifications and prices without notification.

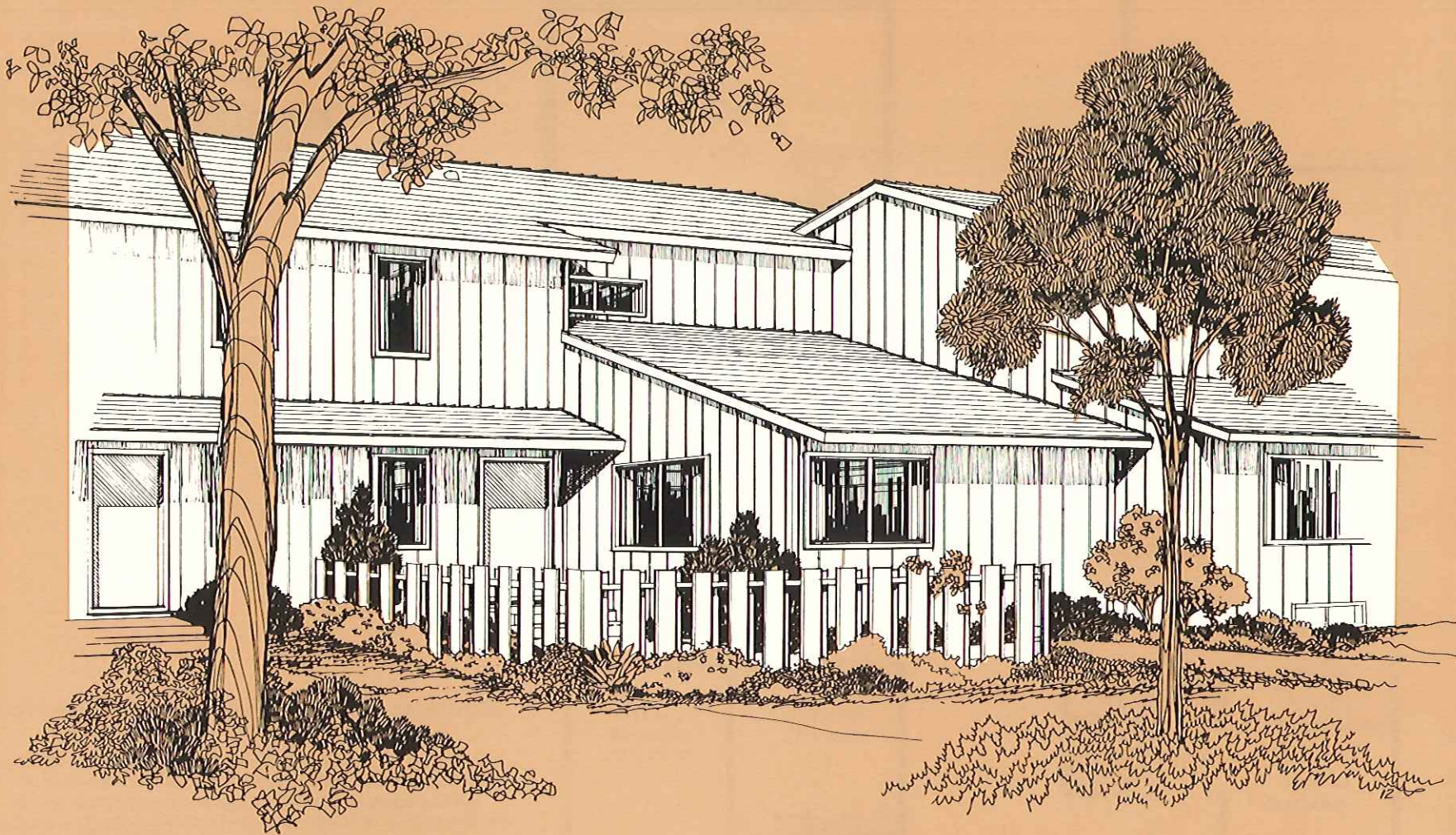
The information, plans, specifications and designs contained in these drawings and specifications are confidential. The recipient acknowledges that these drawings and specifications are the property of Rossmoor Corporation and that they shall not be disclosed to others, used or reproduced in whole or in part, for any purpose without the written consent of Rossmoor Corporation.

Copyright by Rossmoor Corporation. ©
All rights reserved.

All dimensions are approximate.
Floor plans and features are subject
to change without notice.

THE WOODLANES

Townhome living at Woodridge Center



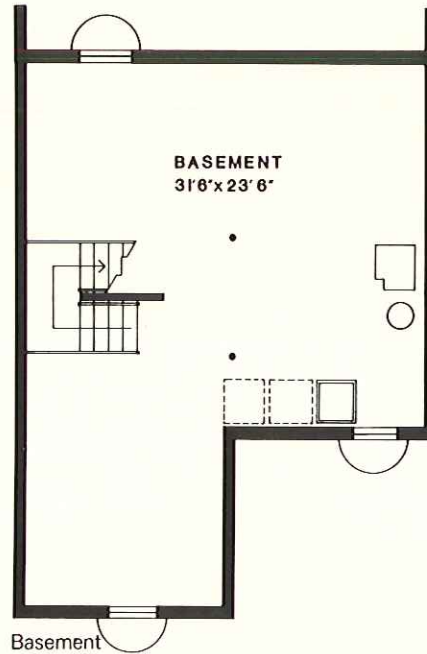
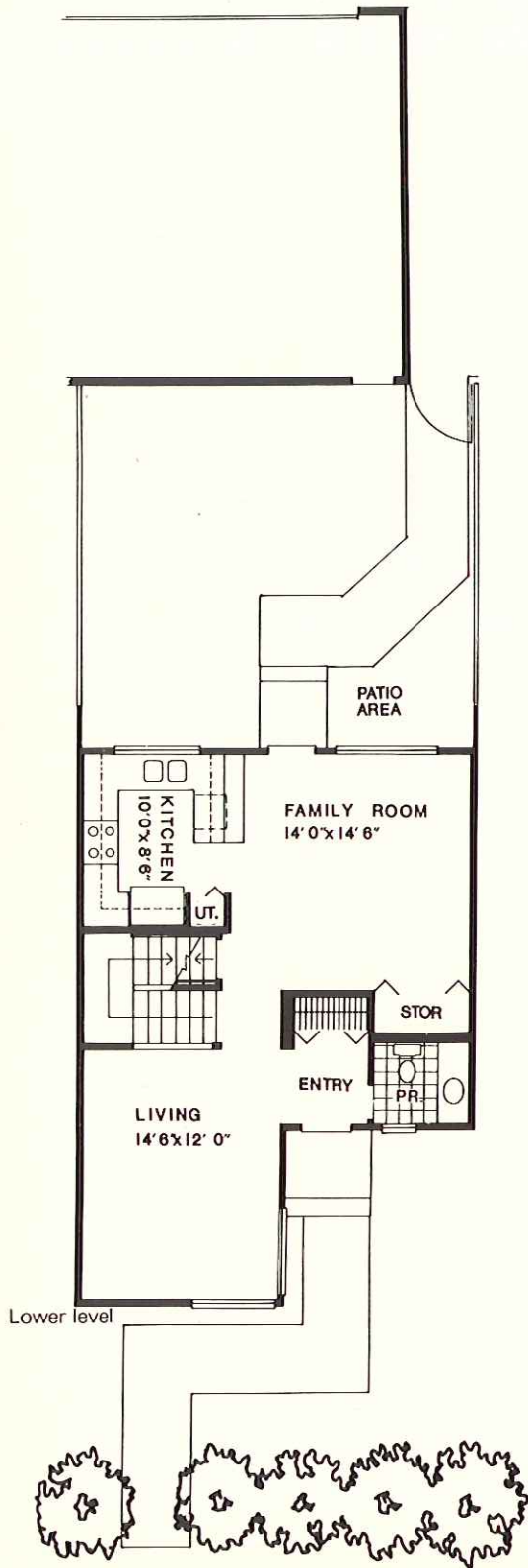
Illustrations are artists' conceptions.

The Willow (Plan 12) 2 bedrooms with 1½ baths

The Willow is an elegant townhome featuring two bedrooms on the upper level, a large living room and family room on the lower level and is available with a basement. A conveniently located powder room is immediately off the foyer. A carpeted stairway leads up to the master bedroom, second bedroom and full bath with vanity.

The Willow (Plan 12)

W
Woodridge
Center



Rossmoor Associates reserves the right to modify the design, details, specifications and prices without notification.

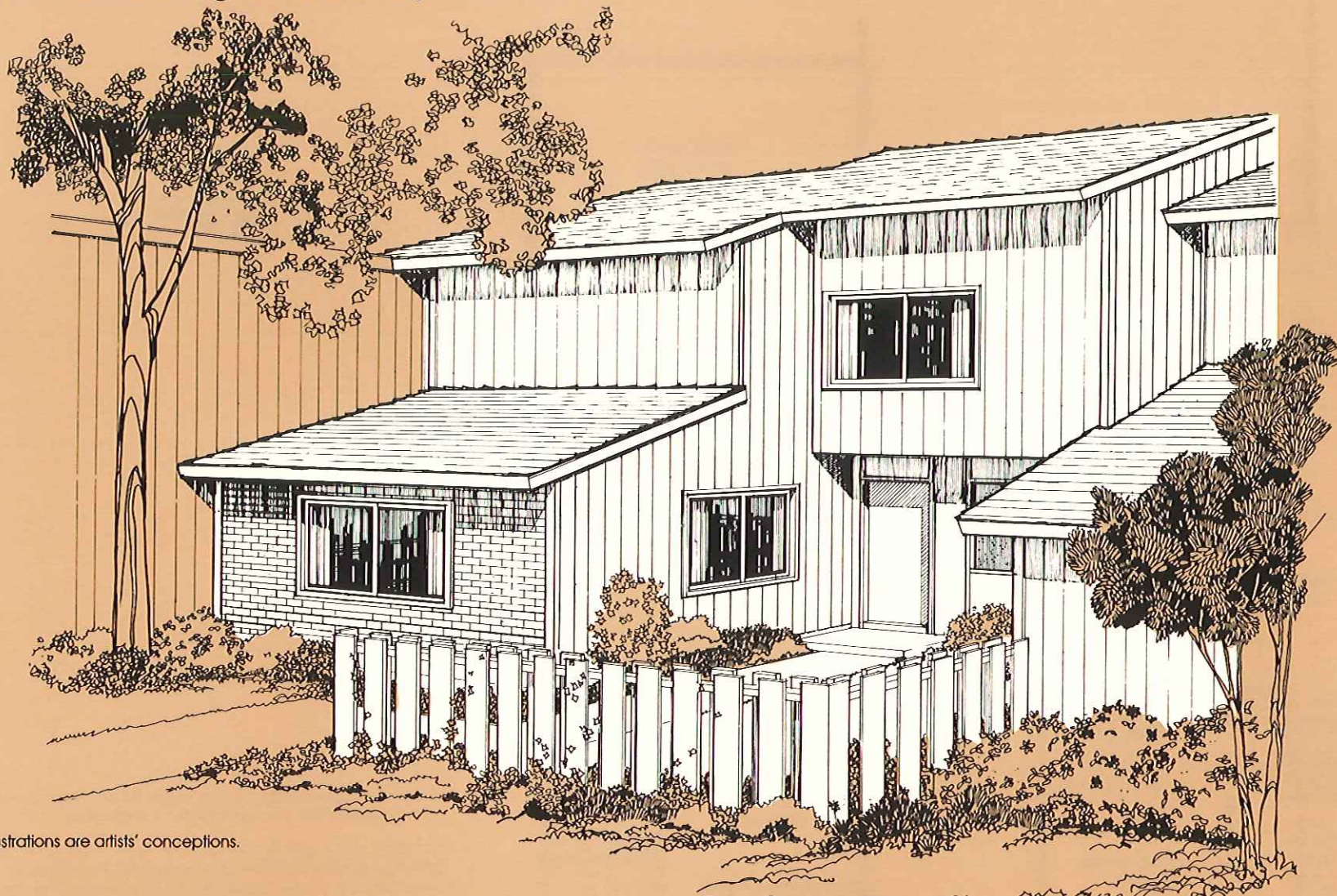
The information, plans, specifications and designs contained in these drawings and specifications are confidential. The recipient acknowledges that these drawings and specifications are the property of Rossmoor Corporation and that they shall not be disclosed to others, used or reproduced in whole or in part, for any purpose without the written consent of Rossmoor Corporation.

Copyright by Rossmoor Corporation. ©
All rights reserved.

All dimensions are approximate.
Floor plans and features are subject
to change without notice.

THE WOODLANES

Townhome living at Woodridge Center



Illustrations are artists' conceptions.

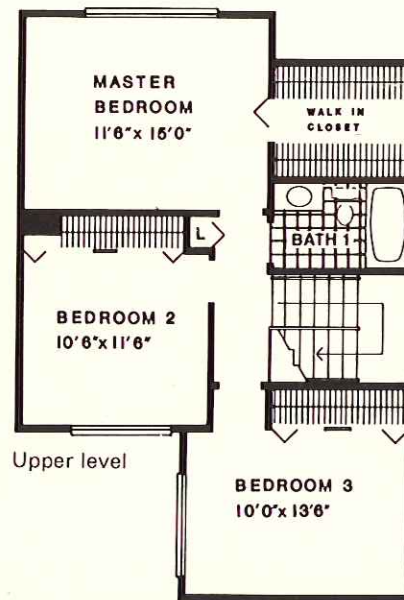
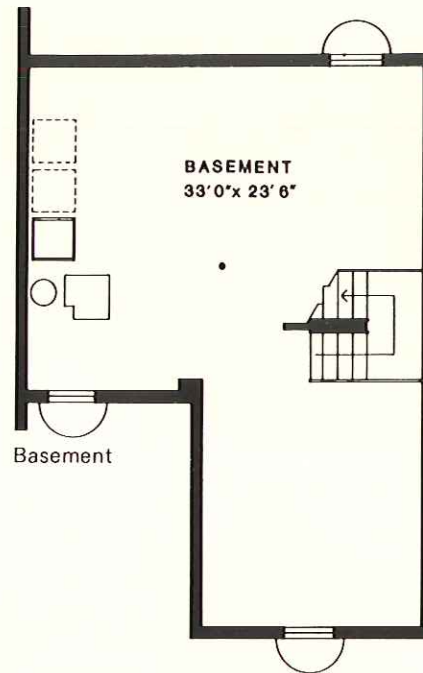
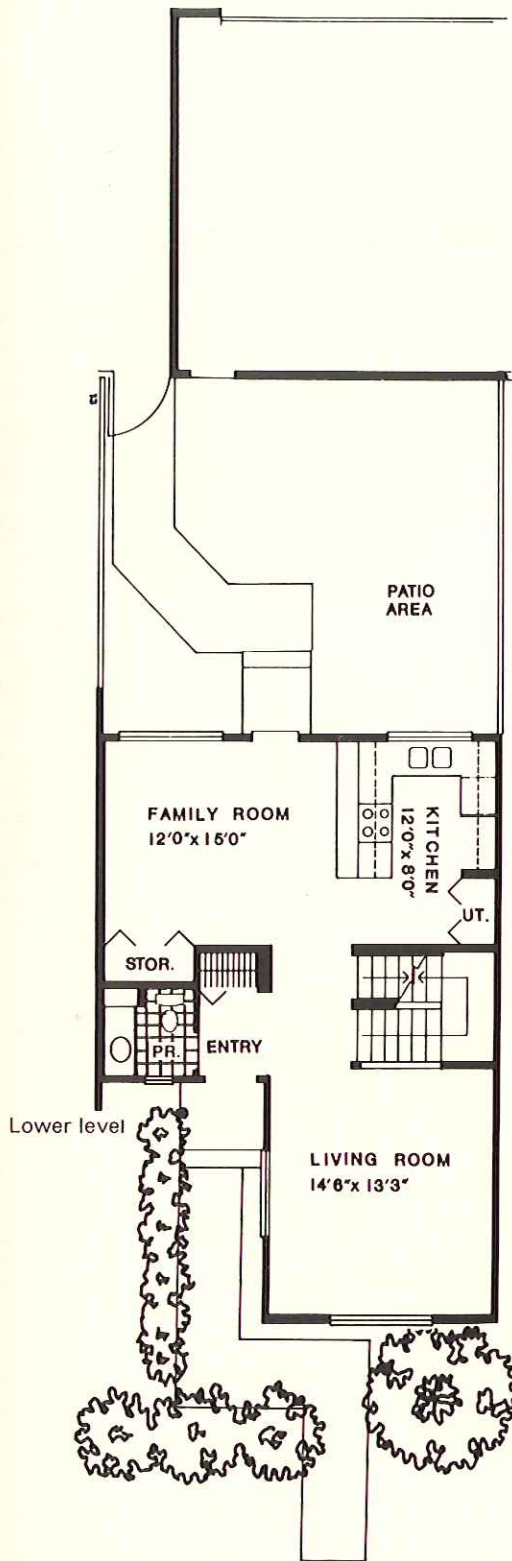
The Cedar (Plan 13) 3 bedrooms with 1½ baths

The Cedar is a beautiful, two level townhome, available with a full basement. The upper level is occupied by the three bedrooms and full bath. The master bedroom over-looks the patio area and includes a large walk-in closet. The lower level offers a comfortable living room and an ample family room/country kitchen which opens onto the patio area; an ideal arrangement for indoor/outdoor living. There is a conveniently located powder room off the lower level entrance.

Many of the models are available with two-car garages and basements as optional items.

The Cedar (Plan 13)

W
Woodridge
Center



Rossmoor Associates reserves the right to modify the design, details, specifications and prices without notification.

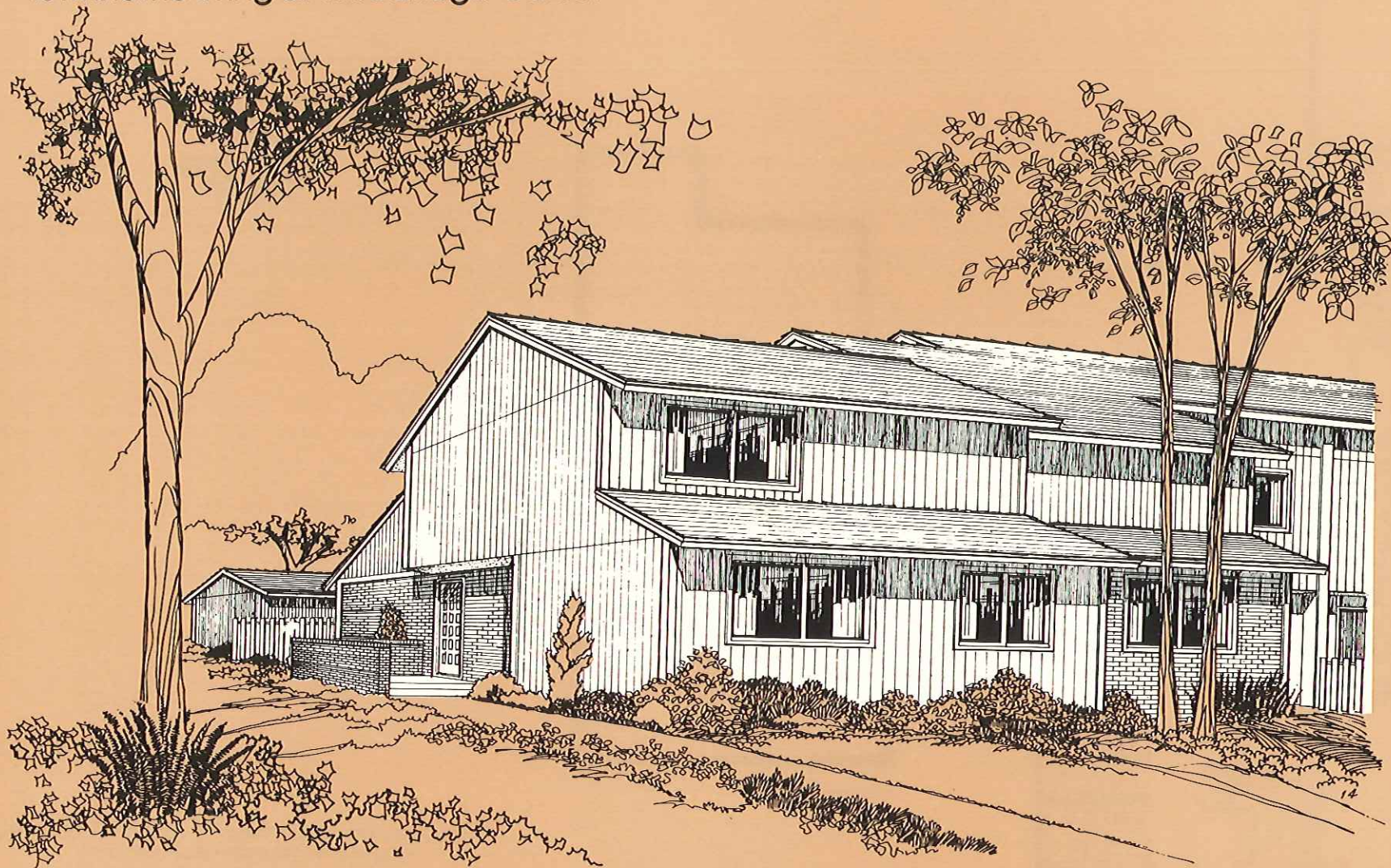
The information, plans, specifications and designs contained in these drawings and specifications are confidential. The recipient acknowledges that these drawings and specifications are the property of Rossmoor Corporation and that they shall not be disclosed to others, used or reproduced in whole or in part, for any purpose without the written consent of Rossmoor Corporation.

Copyright by Rossmoor Corporation.©
All rights reserved.

All dimensions are approximate.
Floor plans and features are subject
to change without notice.

THE WOODLANES

Townhome living at Woodridge Center



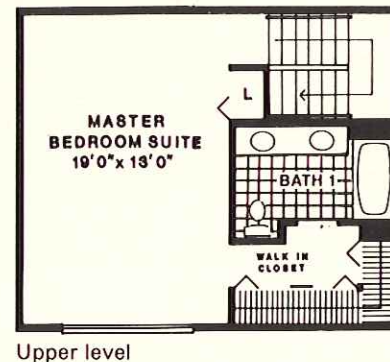
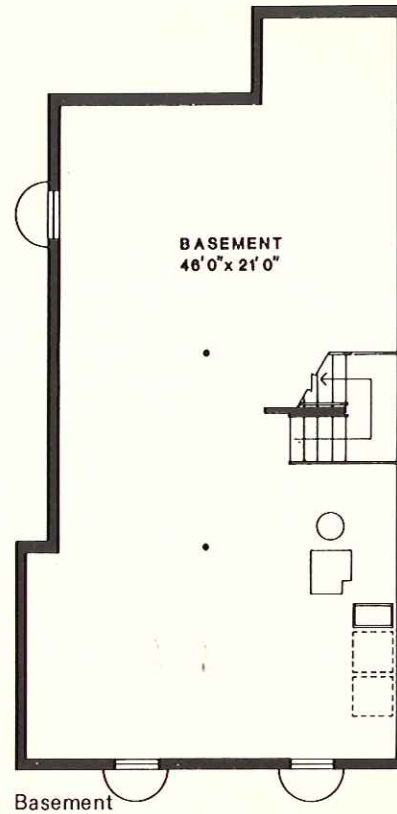
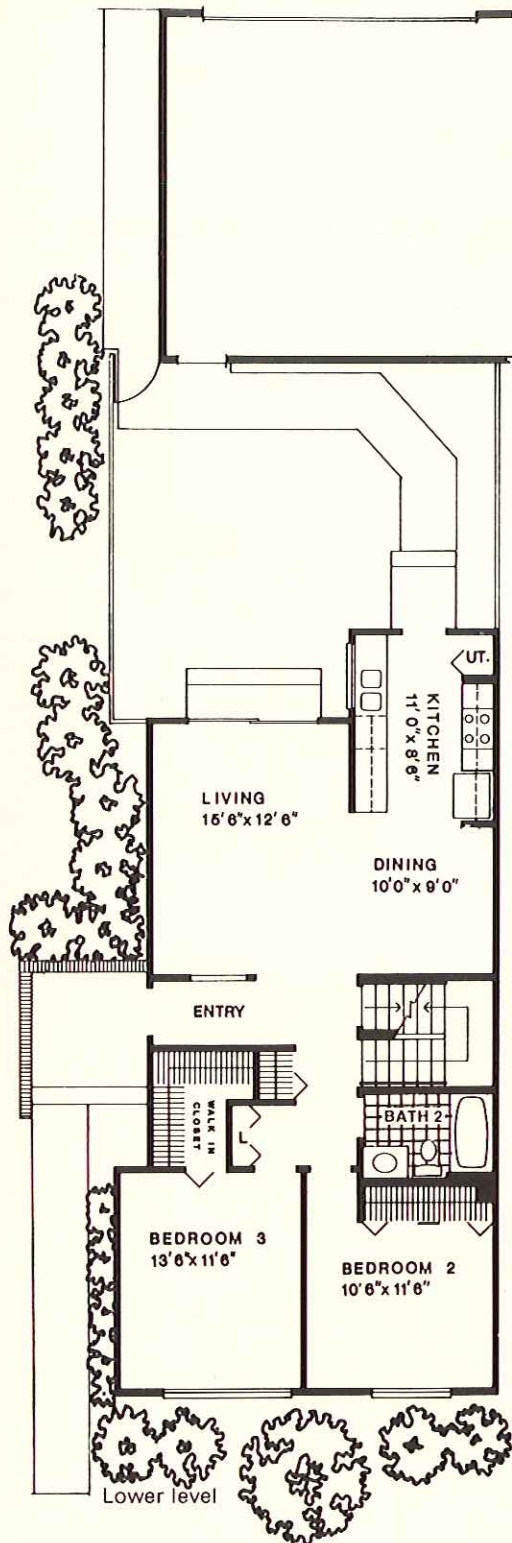
Illustrations are artists' conceptions.

The Hickory (Plan 14) 3 bedrooms with 2 baths

The Hickory features a dramatically styled master bedroom suite with walk-in closet and private bath occupying the entire second floor. The first floor includes a spacious living room with separate dining area and a kitchen with pantry. The second bedroom makes a perfect den and the third bedroom features a walk-in closet. This home also includes a basement and garage.

The Hickory (Plan 14)

WE
Woodridge
Center



Rossmoor Associates reserves the right to modify the design, details, specifications and prices without notification.

The information, plans, specifications and designs contained in these drawings and specifications are confidential. The recipient acknowledges that these drawings and specifications are the property of Rossmoor Corporation and that they shall not be disclosed to others, used or reproduced in whole or in part, for any purpose without the written consent of Rossmoor Corporation.

Copyright by Rossmoor Corporation. ©
All rights reserved.

All dimensions are approximate.
Floor plans and features are subject
to change without notice.