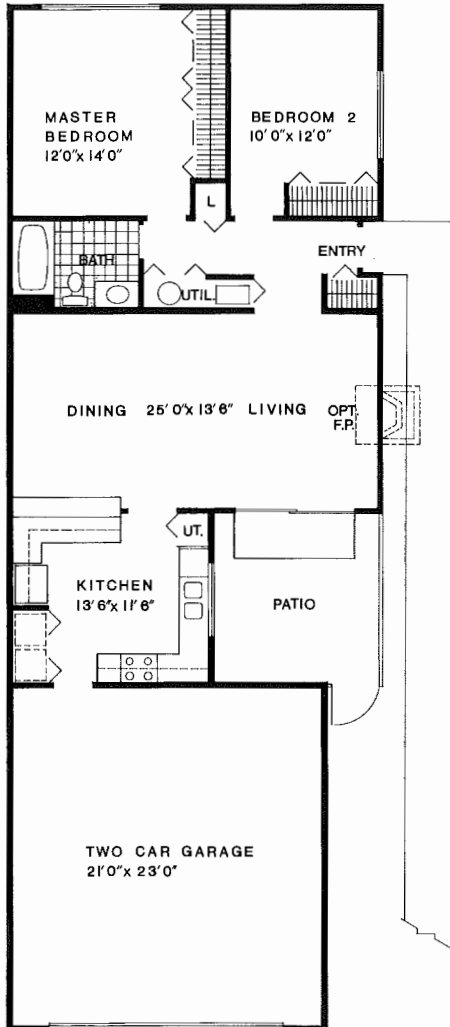


Illustration is artist's conception.



Habitats '76

Patio homes for Woodridge Center.

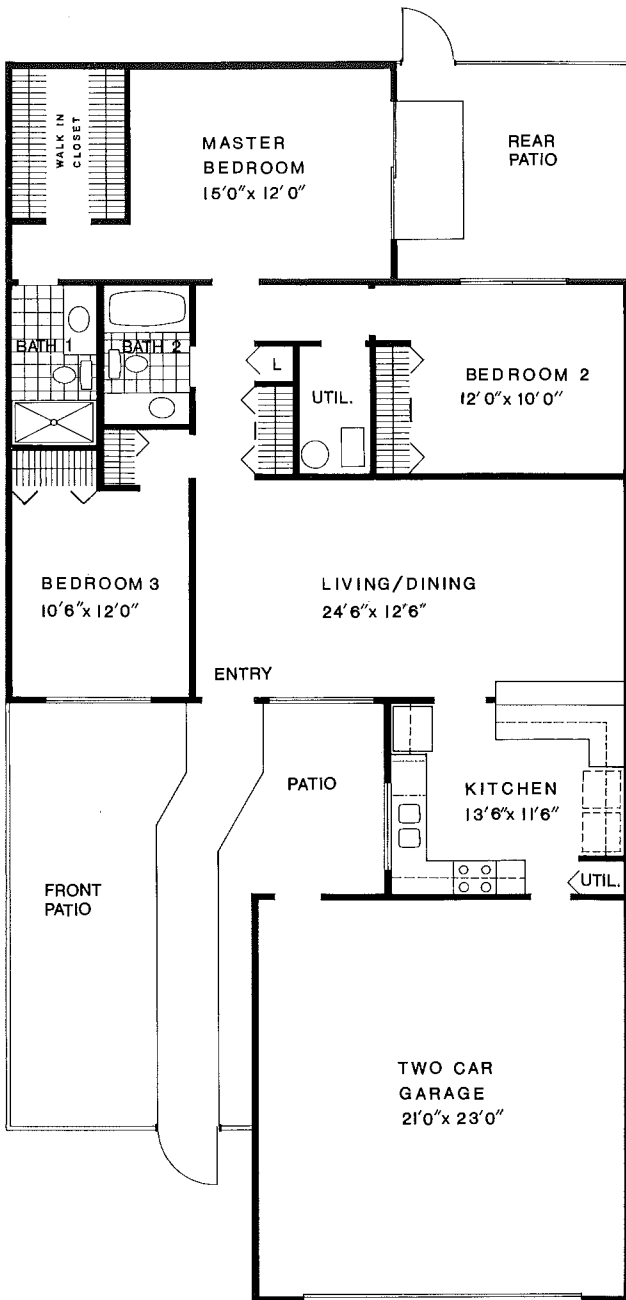
Patio homes are a new way to bring together the best of indoor and outdoor living. Patios, courts and entryways combine to give you a year 'round open air feeling.

Most plans are offered with optional fireplaces
 All Habitats '76 homes include oversize two-car garages.

THE CONTEMPORA (Plan 21)

2 Bedrooms with 1 Bath

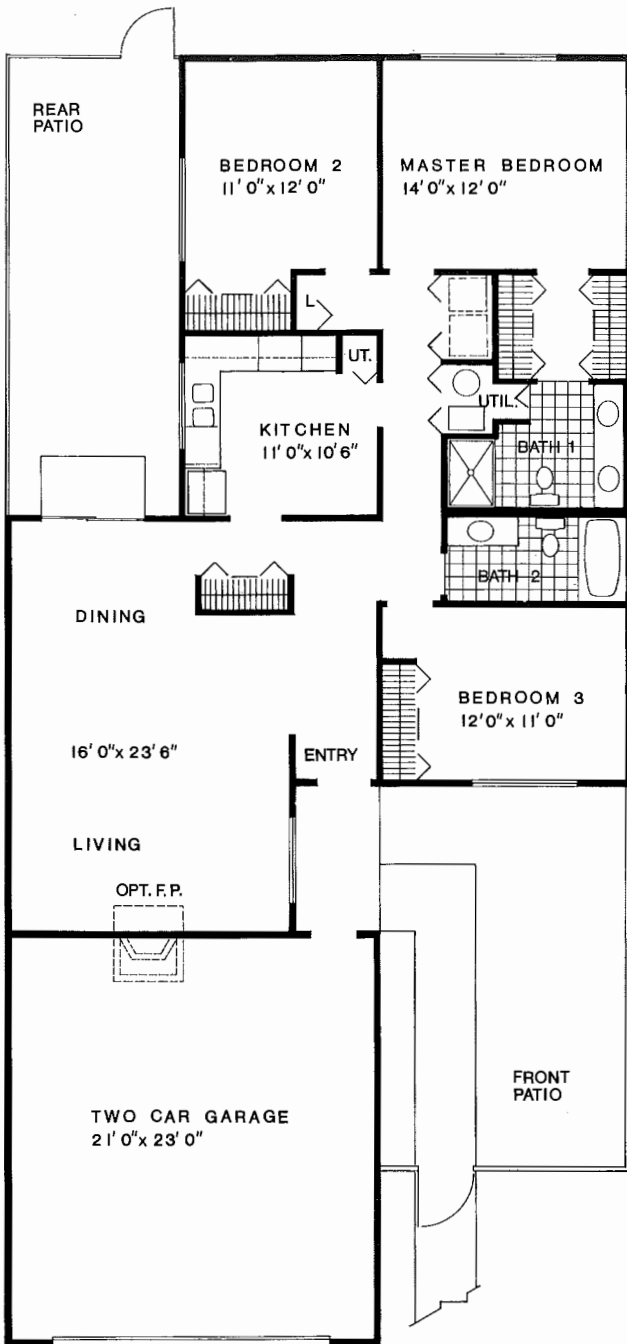
This home has its own private patio leading to the living room. A special convenience feature is the direct access to the kitchen from the garage.



THE ENVIRONS (Plan 22)

3 Bedrooms with 2 Baths

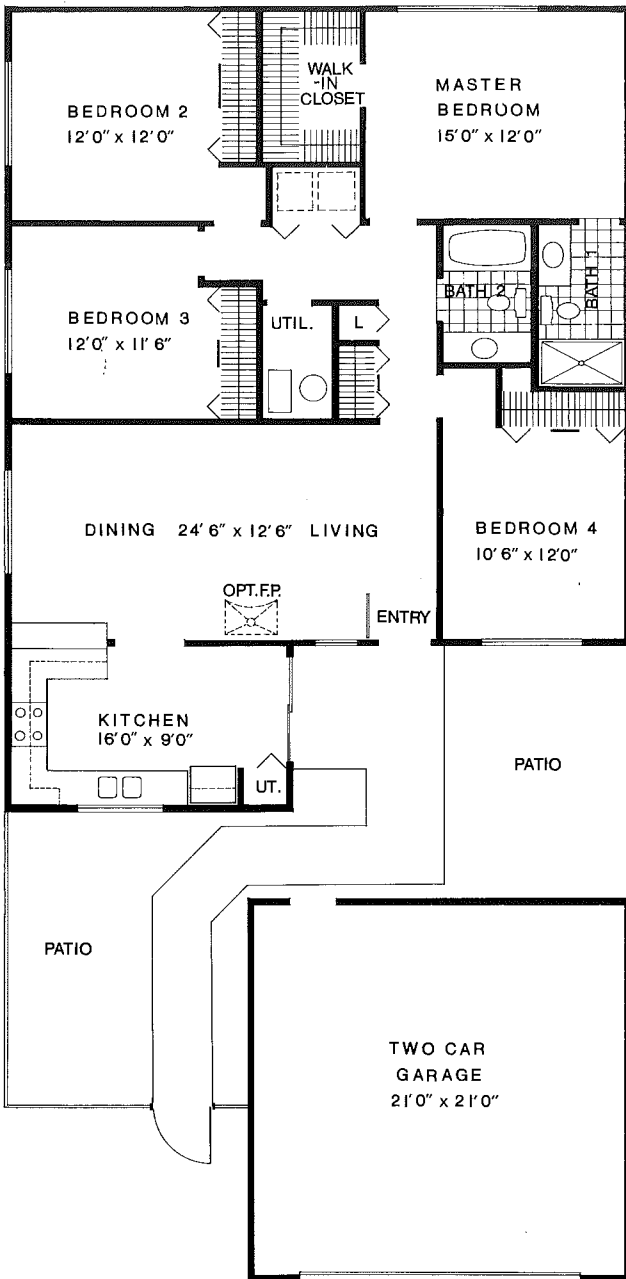
The living room opens onto a large enclosed patio. The master bedroom has a separate private patio area, its own full bath and walk-in closet. Privacy fencing encloses both patio areas.



THE FUTURA (Plan 23)

3 Bedrooms with 2 Baths

Sliding glass doors lead from the dining room to an enclosed patio area of over 250 square feet. It's an arrangement especially suitable for summer cook-outs. The large master bedroom has a walk-through closet to a private bath with double vanity.



THE SPECTRUM (Plan 24)

4 Bedrooms with 2 Baths

This home has both an entrance patio and private inner patio. You can enter the inner patio from the kitchen or the living room. The master bedroom has a walk-in closet and private bath with vanity.

WOODRIDGE CENTER

Residential Sales
Phone: (312) 963-4000

6955 Woodridge Drive
Woodridge, Ill. 60515

All dimensions are approximate.
Floor plans and features are subject
to change without notice.