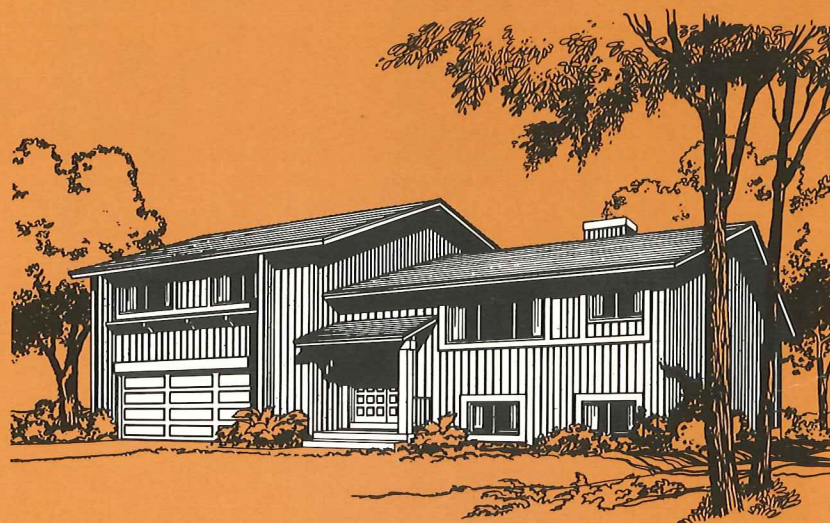


THE HOMESTEADS

Manorhome living at Woodridge Center

The single-family manorhomes of Woodridge Center feature ranch, split-level, and two-story plans. These homes have basements, attached two-car garages and optional wood-burning fireplaces.



The Lucy Standish House (Plan 31)

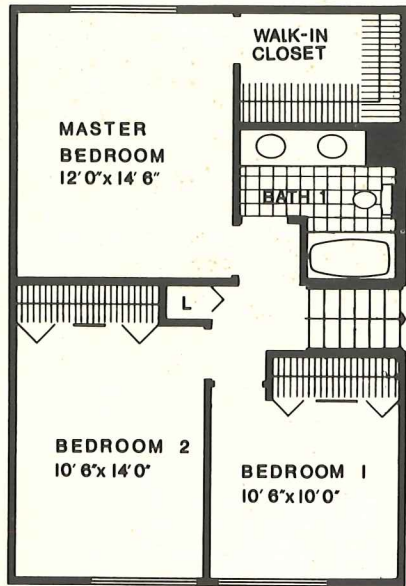
3 Bedrooms with 2 Baths

The interesting split-level plan of this home includes a two-level entrance. Up the stairs from the foyer is an entry to both living room and family room. A stairway off this second level leads to the bedrooms. The master bedroom has its own private walk-in closet.

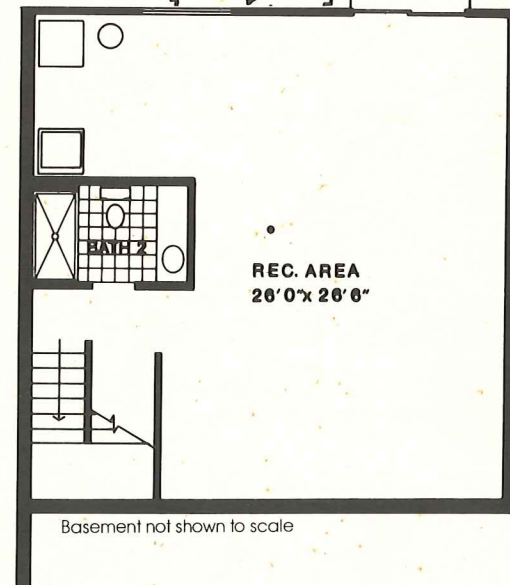
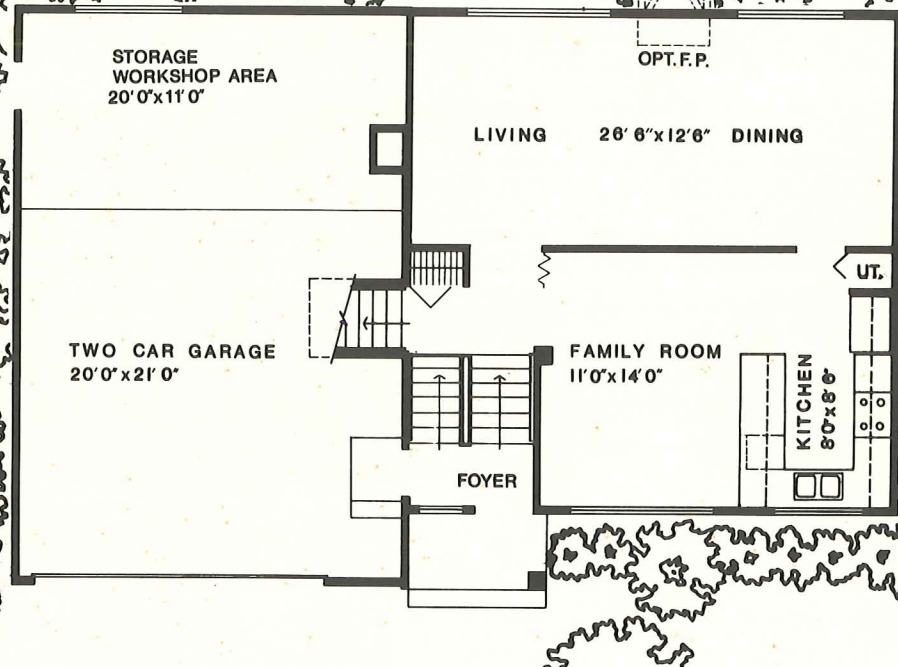
Illustrations are artists' conceptions.

THE LUCY STANDISH HOUSE (Plan 31)

3 Bedrooms with 2 Baths



Upper level not shown to scale



Basement not shown to scale

W
Woodridge
Center

Suggested landscaping treatment shown is for display purposes only.

Rossmoor Associates reserves the right to modify the design, details, specifications and prices without notification.

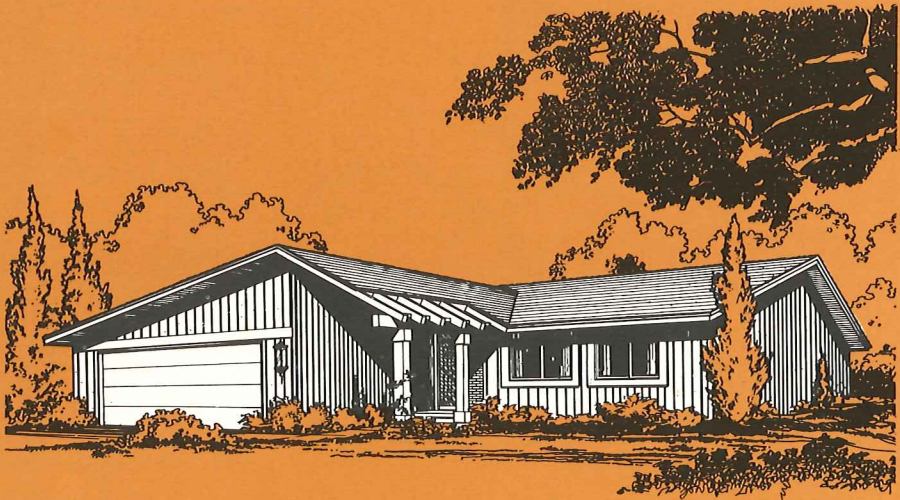
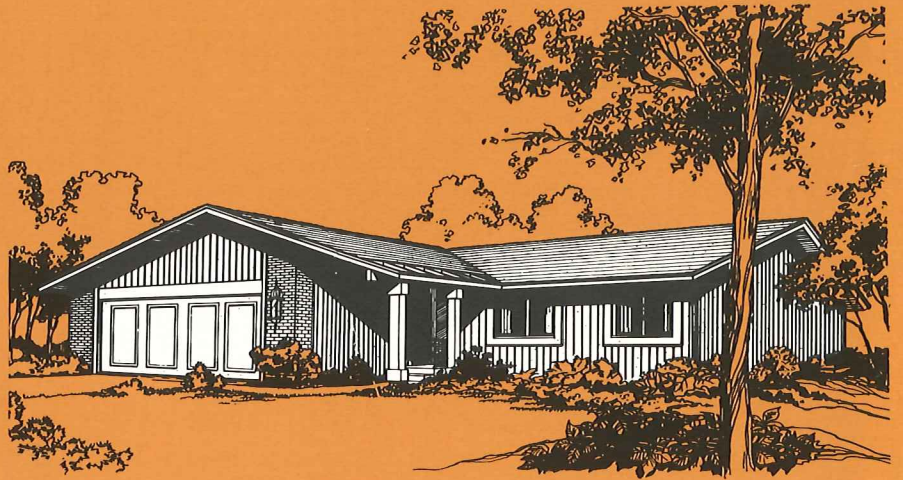
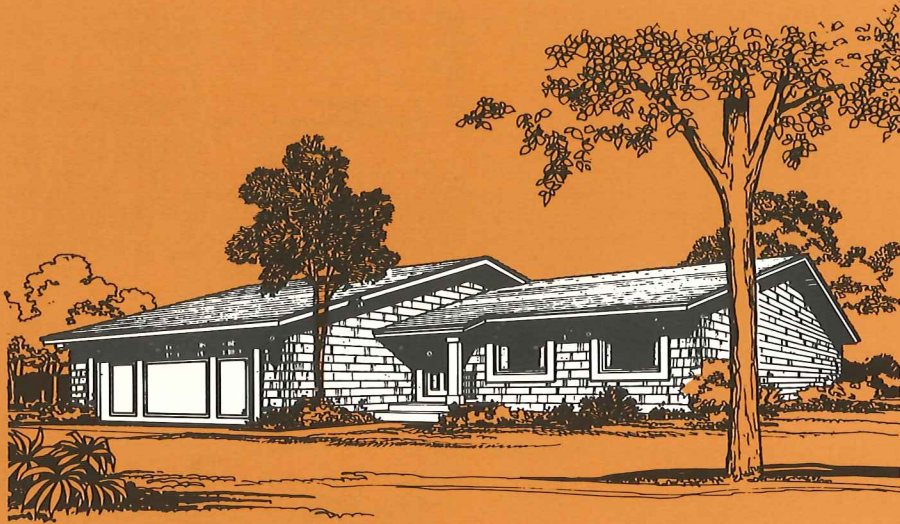
The information, plans, specifications and designs contained in these drawings and specifications are confidential. The recipient acknowledges that these drawings and specifications are the property of Rossmoor Corporation and that they shall not be disclosed to others, used or reproduced in whole or in part, for any purpose without the written consent of Rossmoor Corporation.

Copyright by Rossmoor Corporation. ©
All rights reserved.

All dimensions are approximate.
Floor plans and features are subject
to change without notice.

THE HOMESTEADS

Manorhome living at Woodridge Center



Illustrations are artists' conceptions.

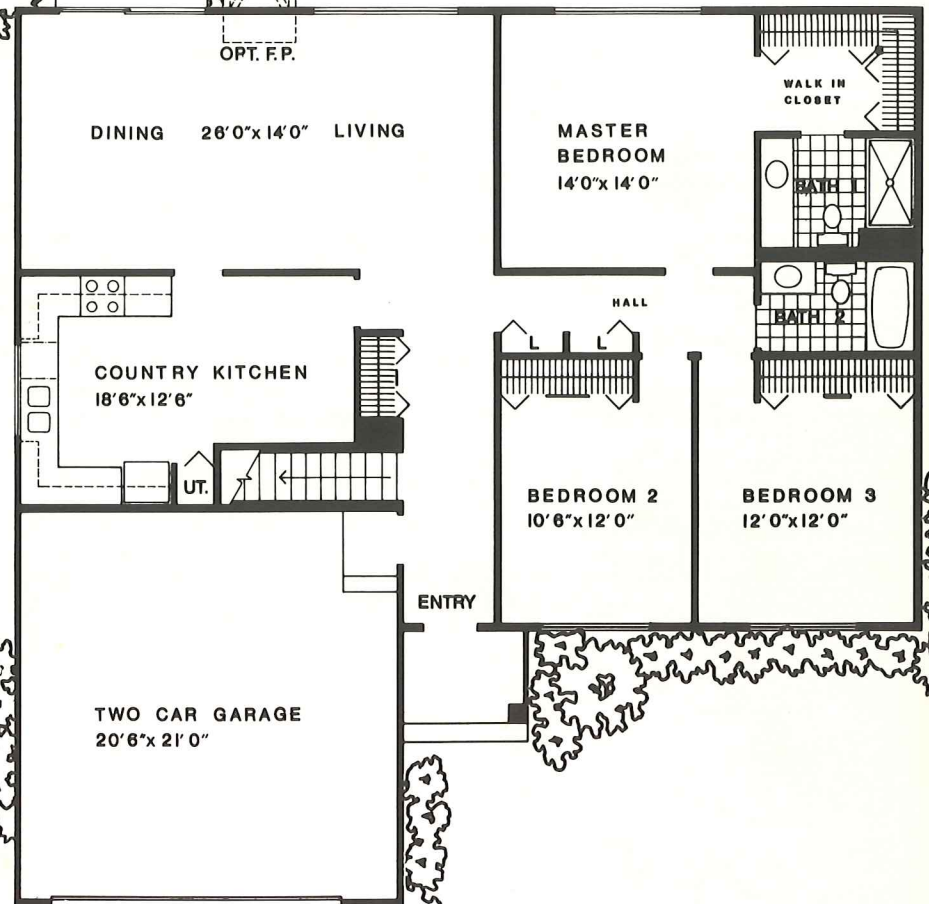
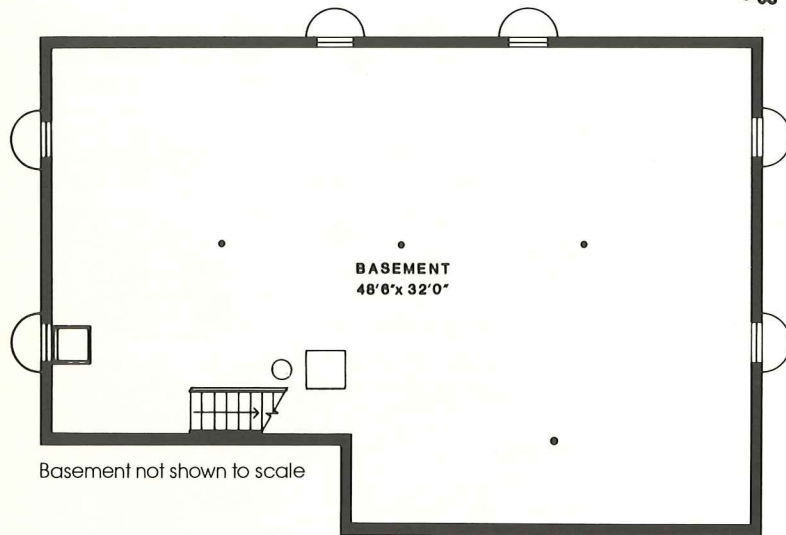
The Christopher Paine House (Plan 32)

3 Bedrooms with 2 Baths

This charming ranch home is spaciouly designed. The large country-style kitchen has an informal dining area. The large master bedroom has its own private walk-in closet and bath. The living/dining room measures 26 feet in length. A huge basement comes with this beautiful home.

THE CHRISTOPHER PAINE HOUSE (Plan 32)

3 Bedrooms with 2 Baths



W
Woodridge
Center

Suggested landscaping treatment shown is for display purposes only.

Rossmoor Associates reserves the right to modify the design, details, specifications and prices without notification.

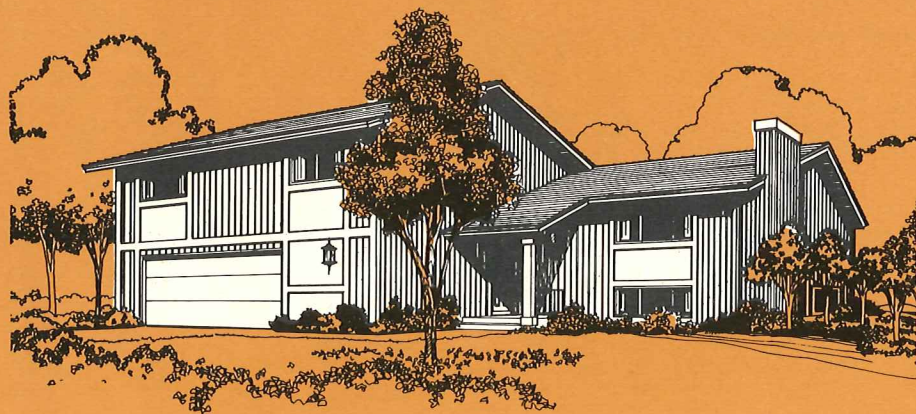
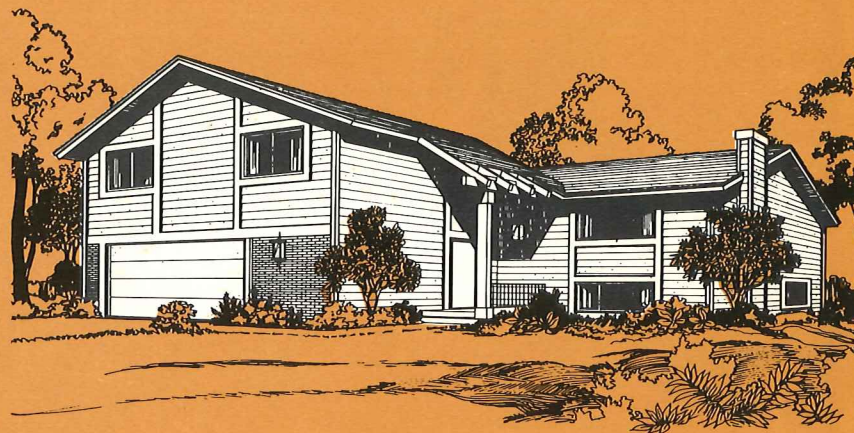
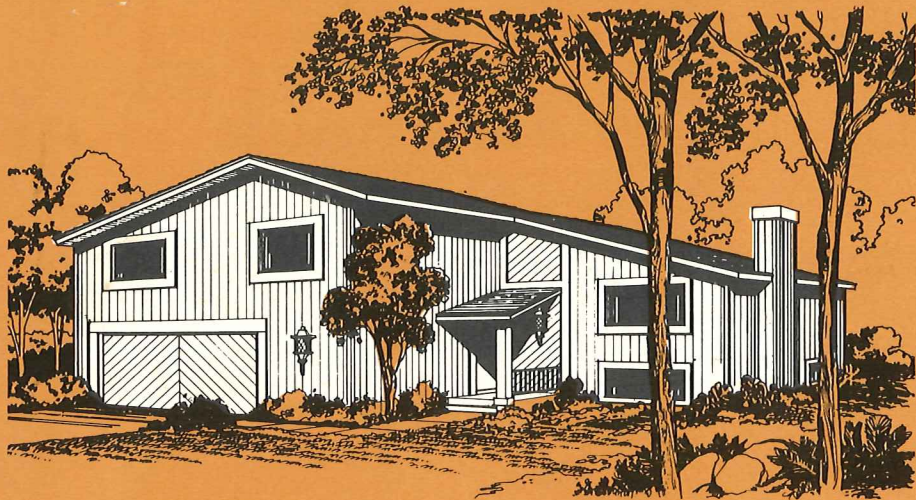
The information, plans, specifications and designs contained in these drawings and specifications are confidential. The recipient acknowledges that these drawings and specifications are the property of Rossmoor Corporation and that they shall not be disclosed to others, used or reproduced in whole or in part, for any purpose without the written consent of Rossmoor Corporation.

Copyright by Rossmoor Corporation.©
All rights reserved.

All dimensions are approximate.
Floor plans and features are subject
to change without notice.

THE HOMESTEADS

Manorhome living at Woodridge Center



The Deacon Goodrich House (Plan 33)

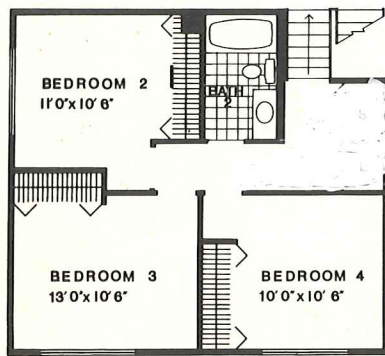
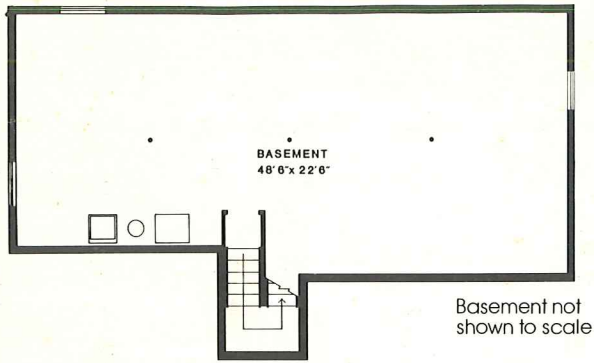
4 Bedrooms with 2 Baths

This impressive split-level home combines adult privacy with plenty of room for children. The large master bedroom is on the first level while three additional bedrooms plus a full bath are on the second level. The family room has sliding glass doors leading to a raised deck. This home comes with an expansive basement, with plenty of natural light.

Illustrations are artists' conceptions.

THE DEACON GOODRICH HOUSE (Plan 33)

4 Bedrooms with 2 Baths



WE
Woodridge
Center

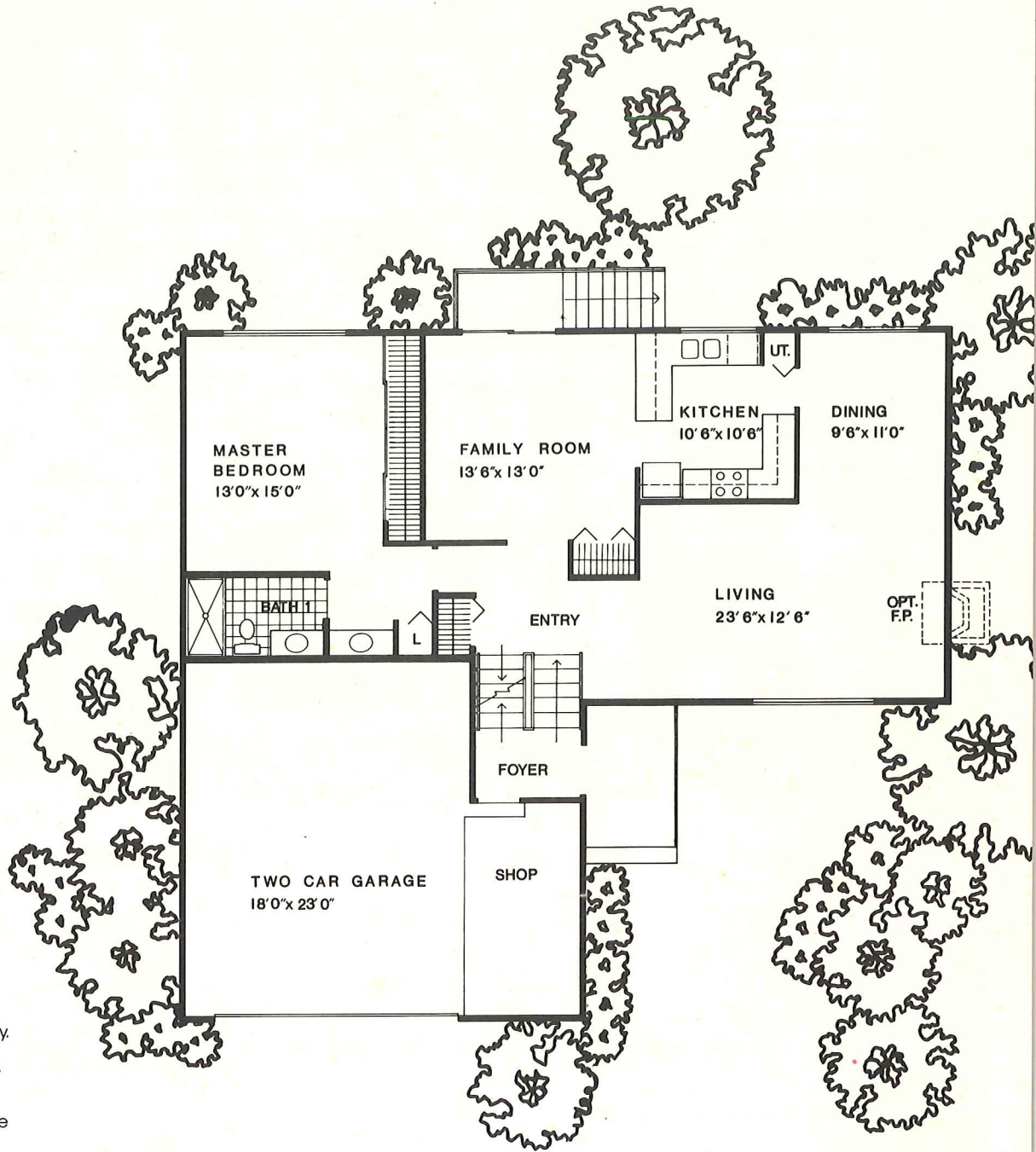
Suggested landscaping treatment shown is for display purposes only.

Rossmoor Associates reserves the right to modify the design, details, specifications and prices without notification.

The information, plans, specifications and designs contained in these drawings and specifications are confidential. The recipient acknowledges that these drawings and specifications are the property of Rossmoor Corporation and that they shall not be disclosed to others, used or reproduced in whole or in part, for any purpose without the written consent of Rossmoor Corporation.

Copyright by Rossmoor Corporation. ©
All rights reserved.

All dimensions are approximate.
Floor plans and features are subject
to change without notice.



THE HOMESTEADS

Manorhome living at Woodridge Center



The Bailey Hobson House (Plan 34)

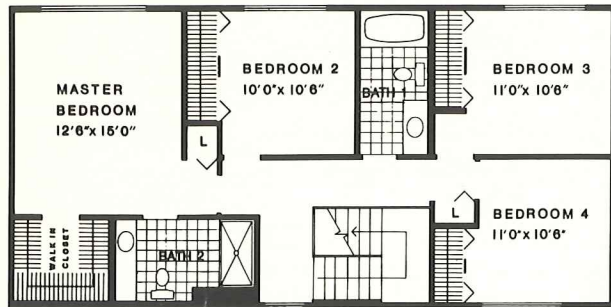
4 Bedrooms with 2½ Baths

This stately two-story is a very luxurious single-family manorhome. The large family room, ideal for entertaining, has additional storage space. The upstairs master bedroom suite includes a private bath and large walk-in closet. This home has a full basement.

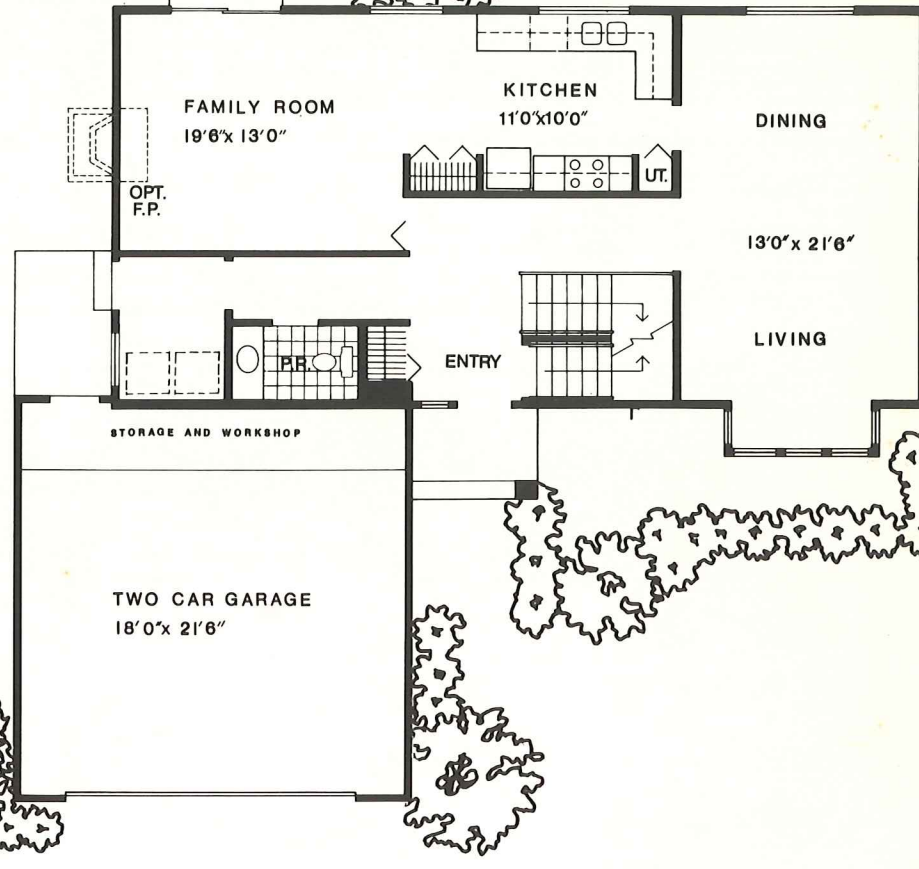
Illustrations are artists' conceptions.

THE BAILEY HOBSON HOUSE (Plan 34)

4 Bedrooms, 2½ Baths



Upper level not shown to scale



WE
Woodridge
Center

Suggested landscaping treatment shown is for display purposes only.

Rossmoor Associates reserves the right to modify the design, details, specifications and prices without notification.

The information, plans, specifications and designs contained in these drawings and specifications are confidential. The recipient acknowledges that these drawings and specifications are the property of Rossmoor Corporation and that they shall not be disclosed to others, used or reproduced in whole or in part, for any purpose without the written consent of Rossmoor Corporation.

Copyright by Rossmoor Corporation.©
All rights reserved.

All dimensions are approximate.
Floor plans and features are subject
to change without notice.



Basement not shown to scale