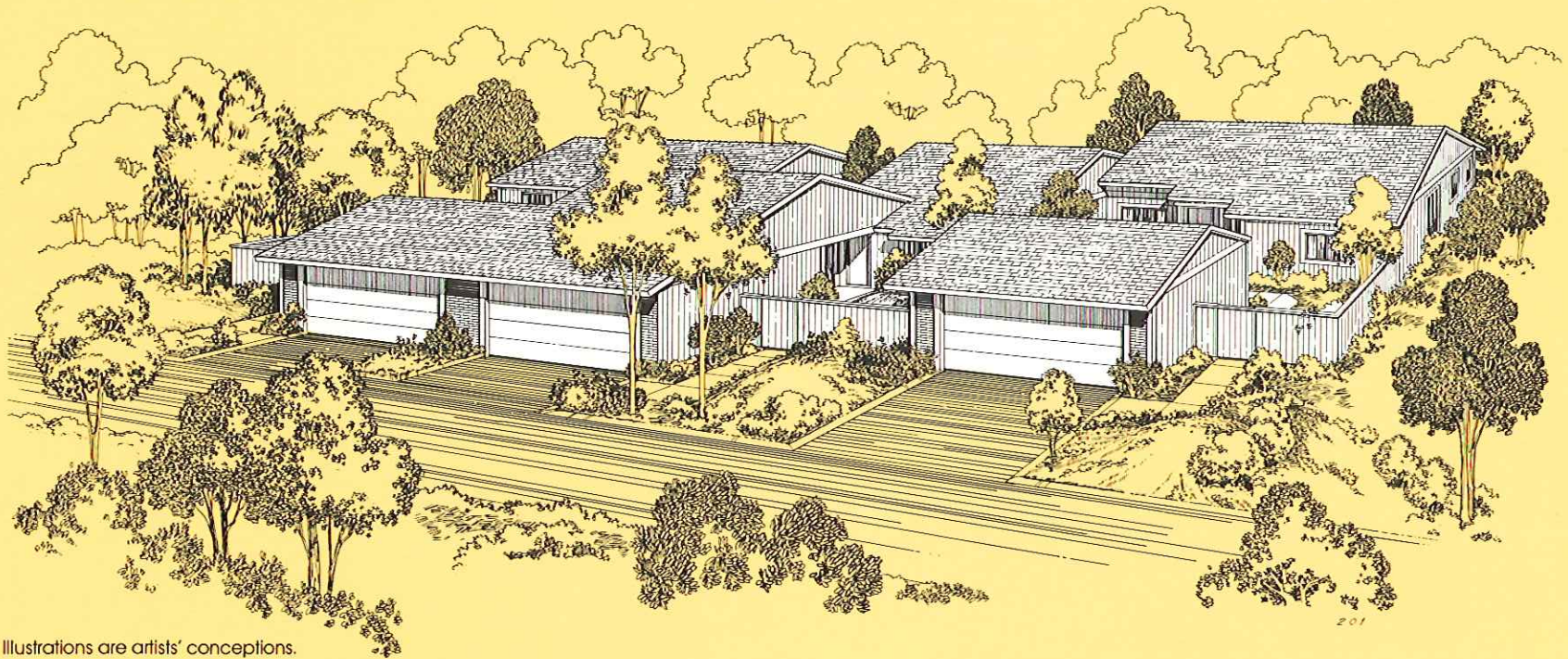


HABITATS '76

Patio home living at Woodridge Center



Illustrations are artists' conceptions.

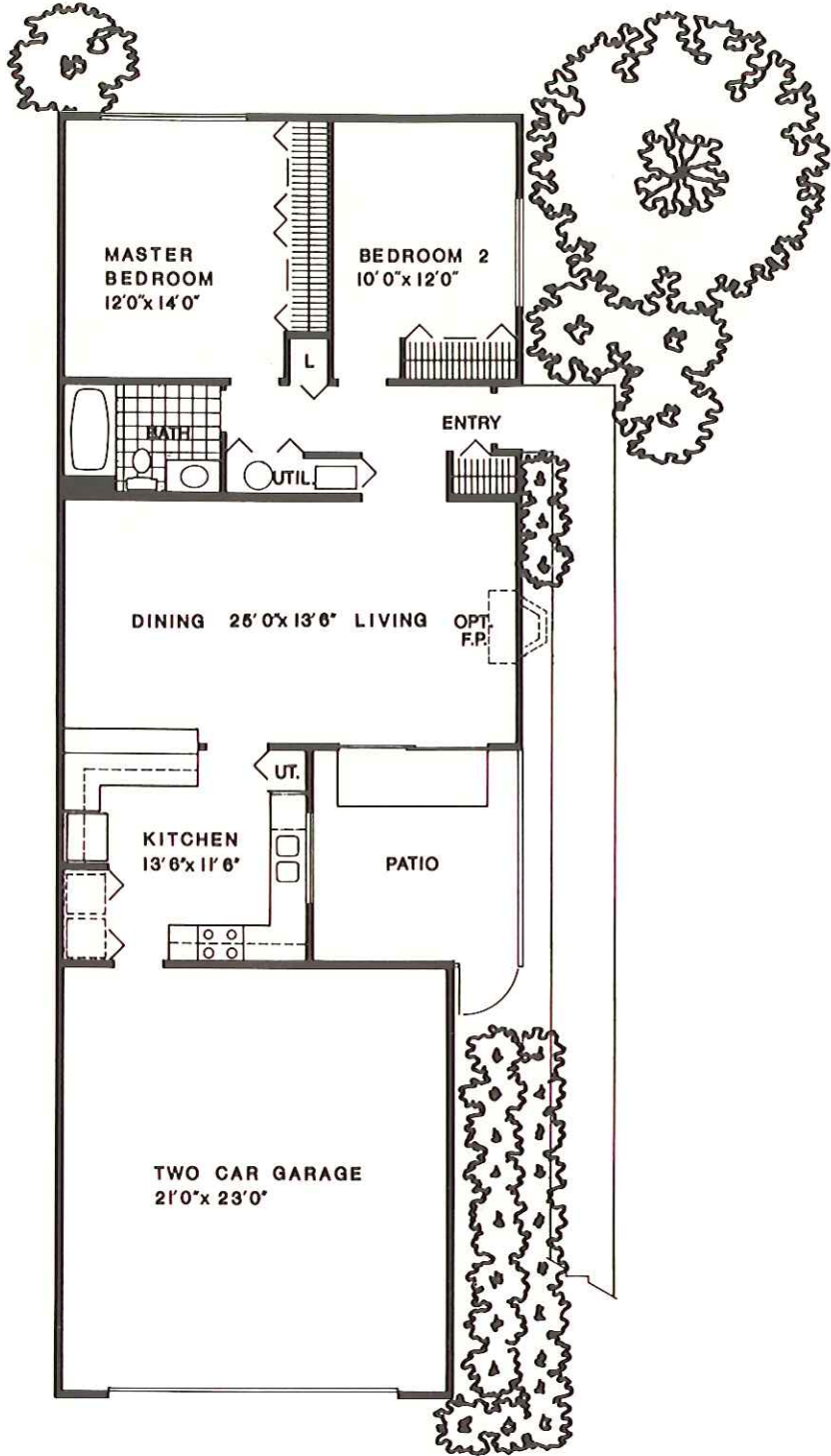
Habitats '76 patio homes are a unique blend of indoor and outdoor living. Large, privacy-fenced patios, courts and entryways combine to create homes that give a feeling of openness all year-around.

The Contempora (Plan 21) 2 bedrooms with 1 bath

The Contempora, a dramatically styled patio home, is ideally suited for contemporary lifestyles. The spacious master bedroom features a full wall of closet space and the second bedroom adapts easily to make a den or study. Whether you're entertaining or just living easy, the extra-large living/dining room opening onto the privacy-fenced patio gives you a four seasons flair. The large country kitchen offers direct access to the attached two car garage.

Most plans are offered with optional fireplaces. All Habitats '76 homes include oversize two-car garages.

The Contempora (Plan 21)



Rossmoor Associates reserves the right to modify the design, details, specifications and prices without notification.

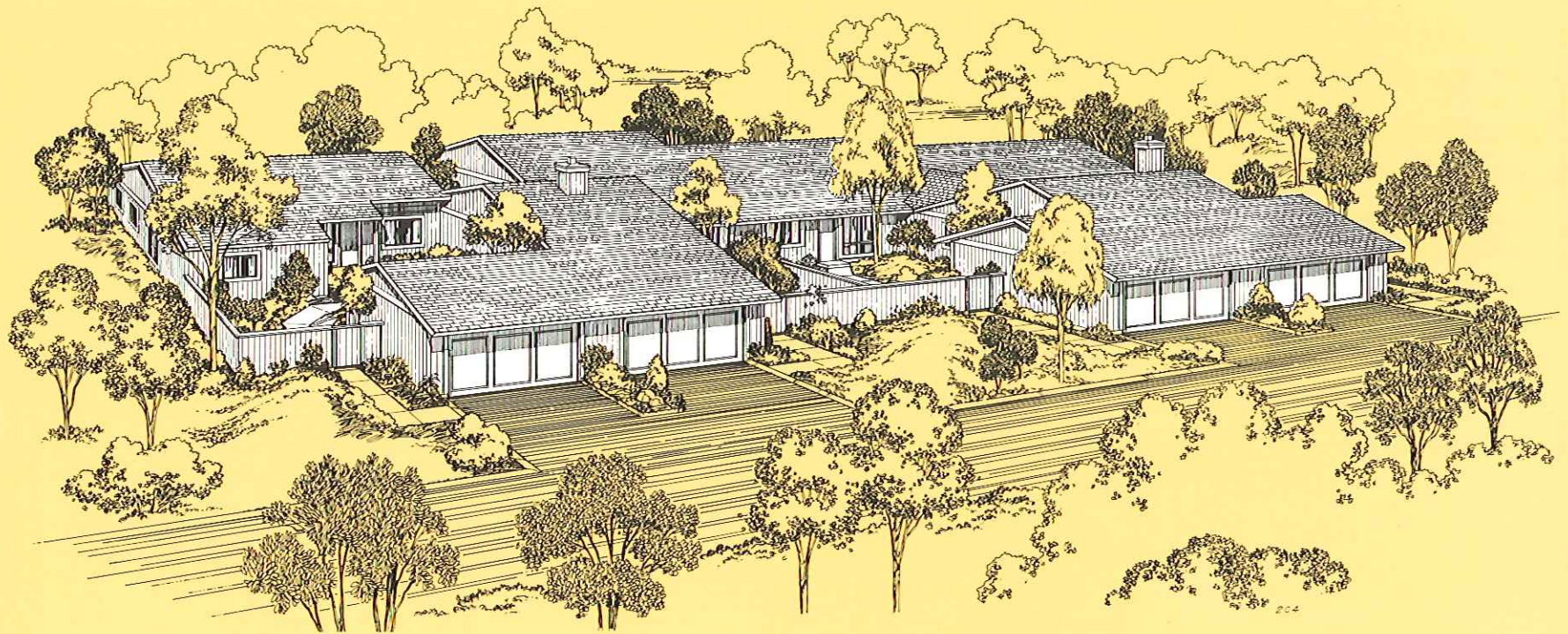
The information, plans, specifications and designs contained in these drawings and specifications are confidential. The recipient acknowledges that these drawings and specifications are the property of Rossmoor Corporation and that they shall not be disclosed to others, used or reproduced in whole or in part, for any purpose without the written consent of Rossmoor Corporation.

Copyright by Rossmoor Corporation. ©
All rights reserved.

All dimensions are approximate.
Floor plans and features are subject to change without notice.

HABITATS '76

Patio home living at Woodridge Center

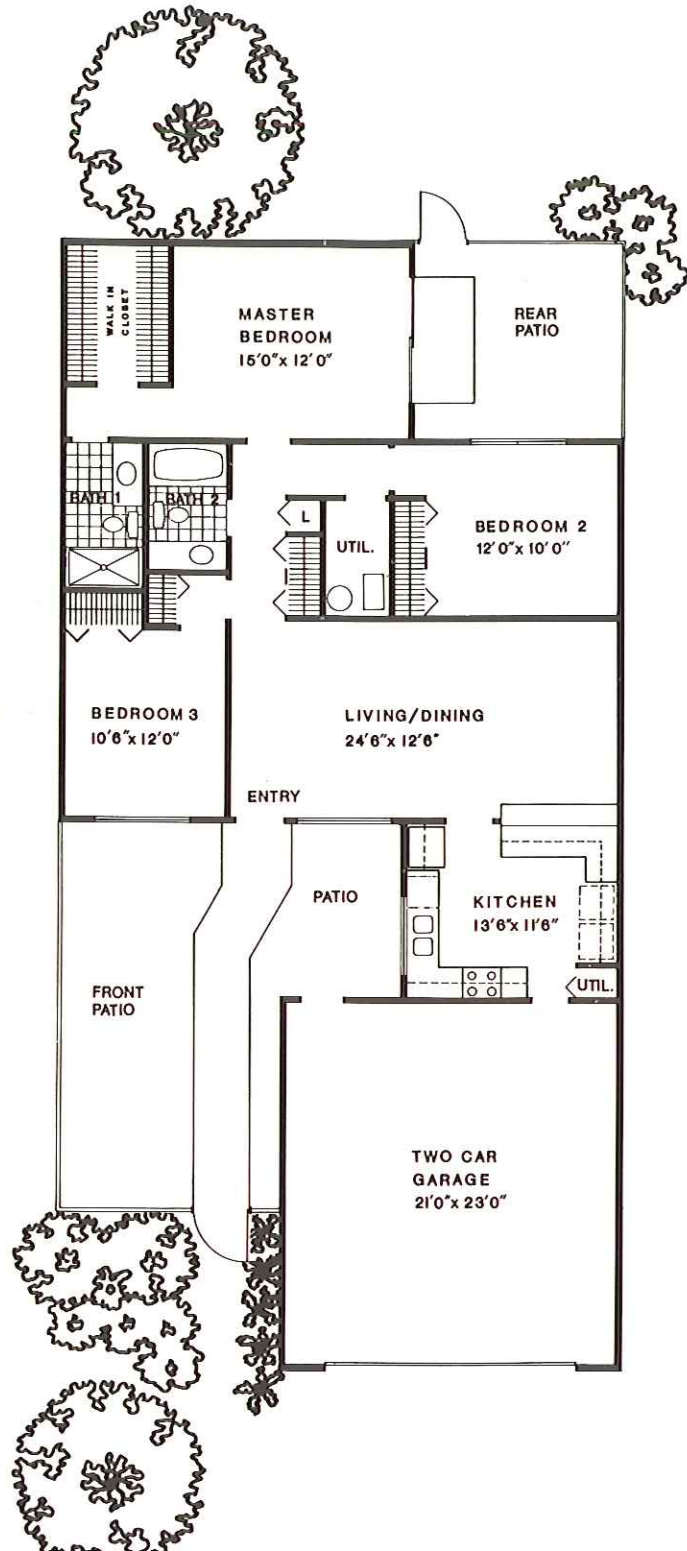


Illustrations are artists' conceptions.

The Environs (Plan 22) 3 bedrooms with 2 baths

The Environs is a tastefully designed Patio home featuring front and rear patios. All living space overlooks patio areas, with the master bedroom opening onto the rear patio. All bedrooms have ample closets and the master bedroom includes a walk-in closet and private bath. The country-style kitchen will make you feel like a gourmet chef.

The Environs (Plan 22)



Rossmoor Associates reserves the right to modify the design, details, specifications and prices without notification.

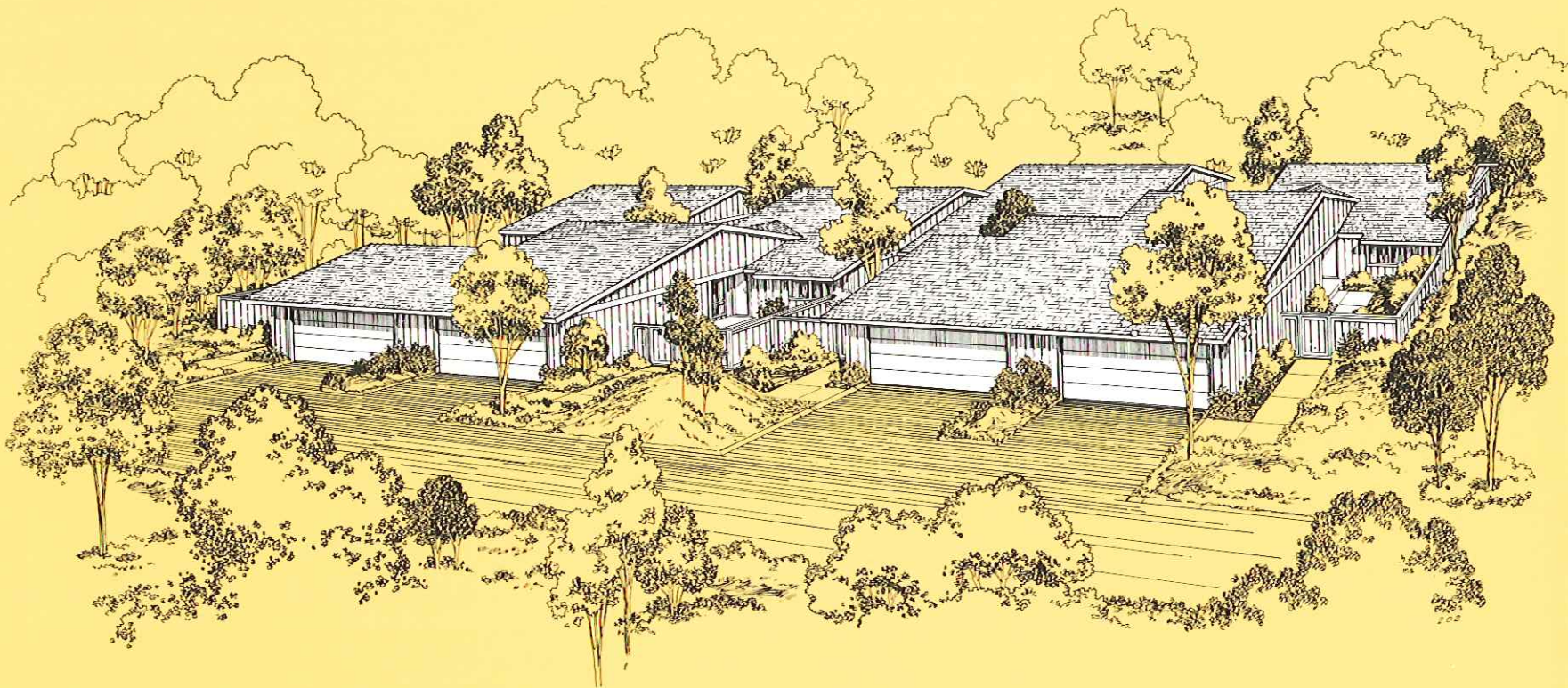
The information, plans, specifications and designs contained in these drawings and specifications are confidential. The recipient acknowledges that these drawings and specifications are the property of Rossmoor Corporation and that they shall not be disclosed to others, used or reproduced in whole or in part, for any purpose without the written consent of Rossmoor Corporation.

Copyright by Rossmoor Corporation. ©
All rights reserved.

All dimensions are approximate.
Floor plans and features are subject
to change without notice.

HABITATS '76

Patio home living at Woodridge Center

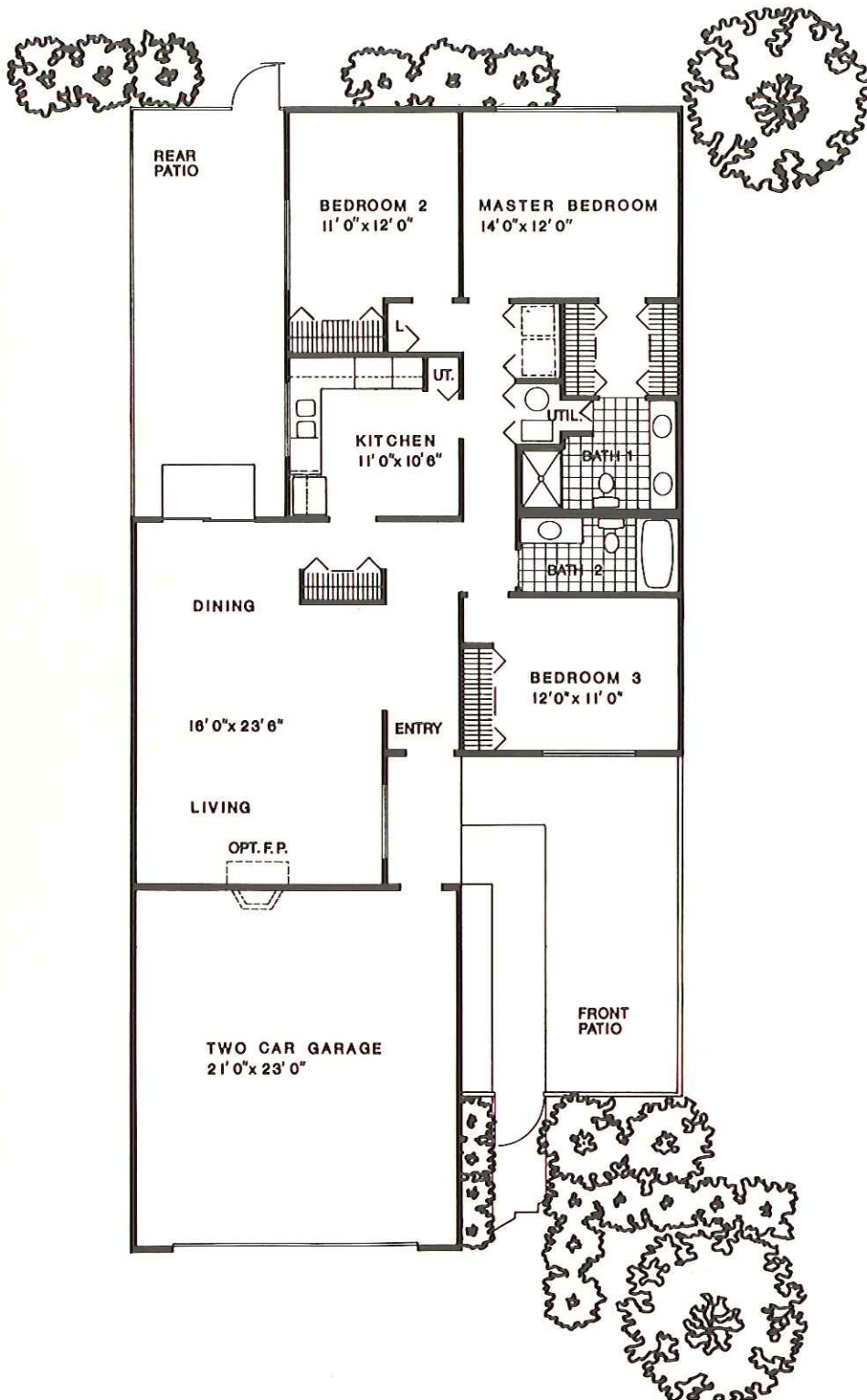


Illustrations are artists' conceptions.

The Futura (Plan 23) 3 bedrooms with 2 baths

The Futura combines elegant design with the wide open feeling of more than 250 square feet of privacy-fenced patios. Sliding glass doors lead onto the extra-large rear patio from the dining room, an arrangement ideally suited for summer cook-outs and year-round entertaining. The master bedroom features a walk-through closet and private bath with double vanity. The other bedrooms overlook private patios. The kitchen includes a breakfast nook and pantry.

The Futura (Plan 23)



Rossmoor Associates reserves the right to modify the design, details, specifications and prices without notification.

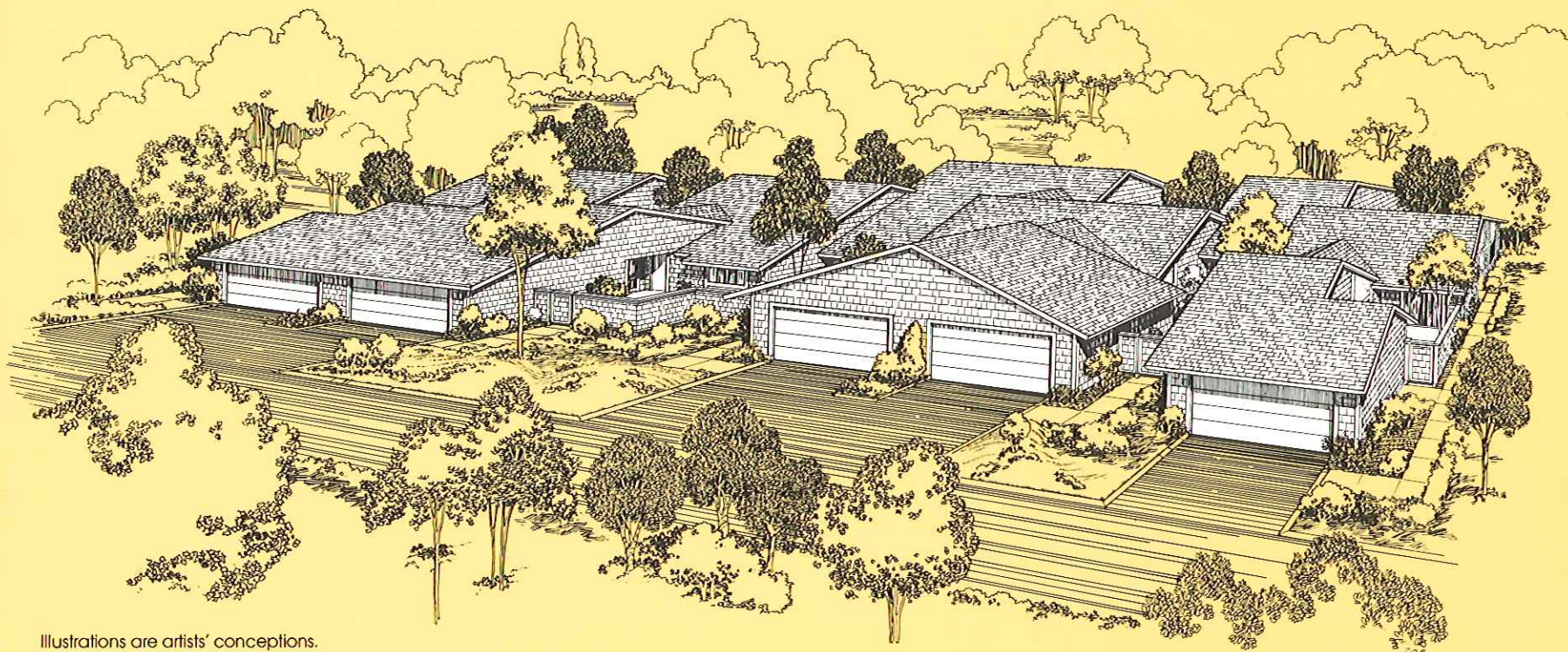
The information, plans, specifications and designs contained in these drawings and specifications are confidential. The recipient acknowledges that these drawings and specifications are the property of Rossmoor Corporation and that they shall not be disclosed to others, used or reproduced in whole or in part, for any purpose without the written consent of Rossmoor Corporation.

Copyright by Rossmoor Corporation.©
All rights reserved.

All dimensions are approximate.
Floor plans and features are subject
to change without notice.

HABITATS '76

Patio home living at Woodridge Center

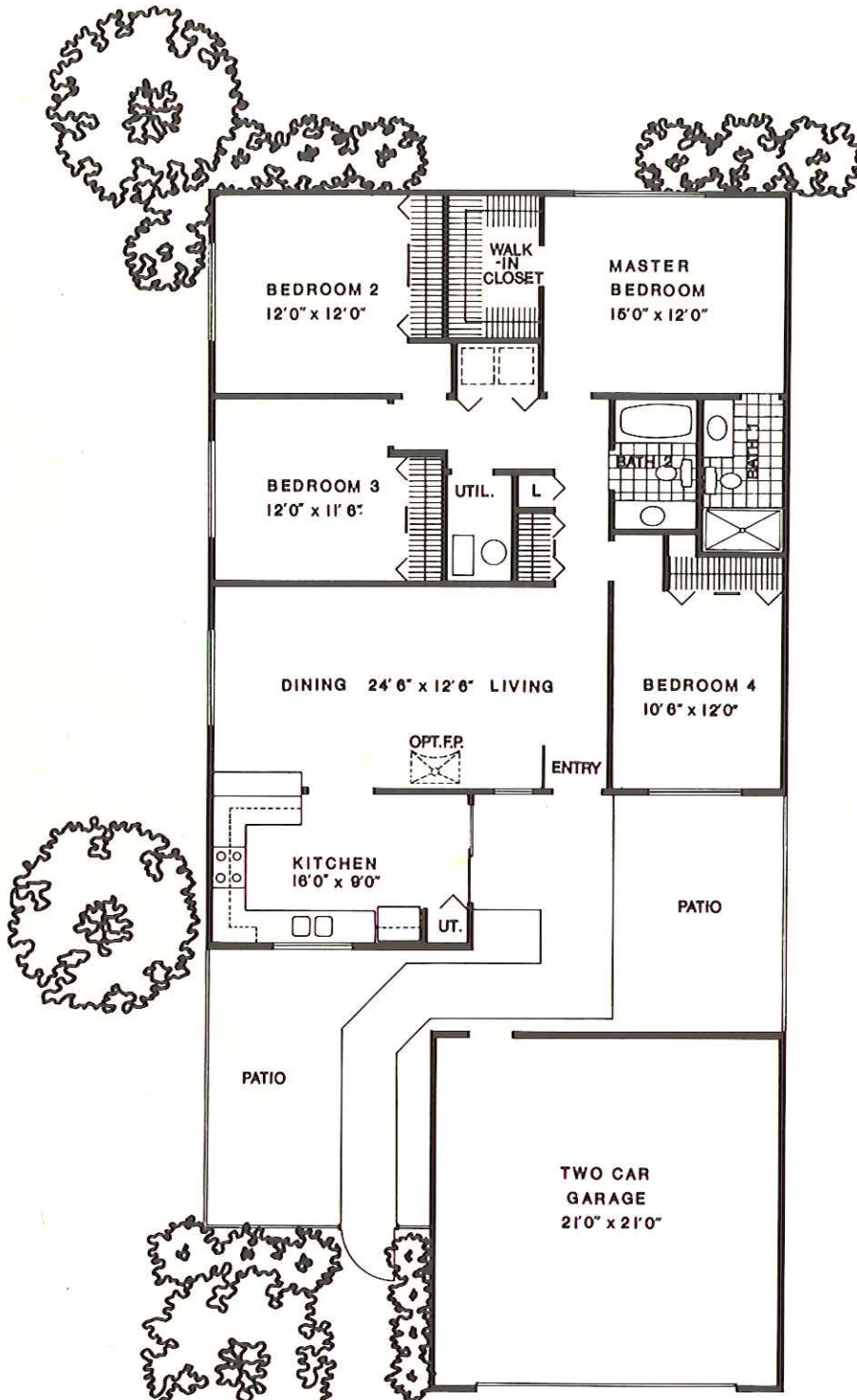


Illustrations are artists' conceptions.

The Spectrum (Plan 24) 4 bedrooms with 2 baths

The Spectrum is Woodridge Center's most luxurious patio home, featuring an exclusive interior patio and an entrance patio. All bedrooms have wall length closets, and the master bedroom includes a private bath and a walk-in closet. The spacious living/dining room opens onto the interior patio, lending a hacienda atmosphere to this beautiful home. The large country kitchen and breakfast nook also open onto a patio.

The Spectrum (Plan 24)



Rossmoor Associates reserves the right to modify the design, details, specifications and prices without notification.

The information, plans, specifications and designs contained in these drawings and specifications are confidential. The recipient acknowledges that these drawings and specifications are the property of Rossmoor Corporation and that they shall not be disclosed to others, used or reproduced in whole or in part, for any purpose without the written consent of Rossmoor Corporation.

Copyright by Rossmoor Corporation. ©
All rights reserved.

All dimensions are approximate.
Floor plans and features are subject
to change without notice.